

# PerryBishop

PROPERTY MADE PERSONAL

**Laurel Drive,** Prestbury, Cheltenham, Gloucestershire GL52 3DE



Detached bungalow • Three bedrooms • Main bedroom with en suite • Off street parking and garage • Low maintenance garden • Set back from road • No onward chain • EPC D



# Laurel Drive,

Prestbury, Cheltenham, Gloucestershire GL52 3DE

## Key Features



3  
Bedrooms



2  
Bathrooms



1  
Reception

## About the property

This detached three-bedroom bungalow offers versatile accommodation and is ideally situated in a peaceful cul-de-sac on the outskirts of the highly sought-after village of Prestbury. Set at the end of a long private driveway, the property enjoys a generous corner plot, providing ample parking along with a detached single garage.

Upon entering, the welcoming hallway leads to all rooms. To the left, you'll find the second double bedroom, while the bright and inviting living room is located on the right. The master bedroom, positioned at the rear of the property, features a fitted wardrobe and an en suite shower room. The third bedroom offers flexibility, perfect for use as a study if desired.

The well-equipped kitchen includes a range of wall and base units, an integrated dishwasher, and access to the rear garden, ideal for outdoor dining or relaxation. The main bathroom is

finished with modern fittings, including a double shower cubicle, hand wash basin and WC.

This property is offered with no onward chain, presenting a fantastic opportunity for buyers looking for a spacious and flexible home in a desirable location.

## Broadband and Mobile Coverage

For an indication of specific broadband and mobile speed and supply or coverage in the area we recommend the Broadband and mobile coverage checker - Ofcom.

## Amenities

Prestbury has been documented from as early as 899AD and was subsequently recognised in the Domesday book. The name in Anglo Saxon terms means 'priests' fortress' possibly taken from The Bishop of Hereford's manor house that was known to have stood in the 13th century. Today Prestbury is a modern village with several eating and drinking options as well as a contemporary hair stylist, all alongside a traditional convenience store and butchers. Also on hand are the public footpaths onto the magnificent Cleeve Hill from where there are spectacular views across Cheltenham including the nearby Prestbury Park racecourse, home of the Gold Cup.

## Directions

From Cheltenham town centre, proceed north, via the Pittville shopping area, on to Prestbury Road. Some way along after the playing field to the left, turn left into Laurel Drive. The property is set back from the road on the left hand side.

What3Words: ///guess.ample.spirit





### Services & Tenure

The tenure is Freehold. All mains services are understood to be connected.

### Local Authority

Cheltenham Borough Council

Council Tax Band D

### Our reference

CHE/SB/KF/02102024

### We'd love to hear from you

140 Bath Road, Cheltenham, Gloucestershire, GL53 7NG

T: 01242 246980

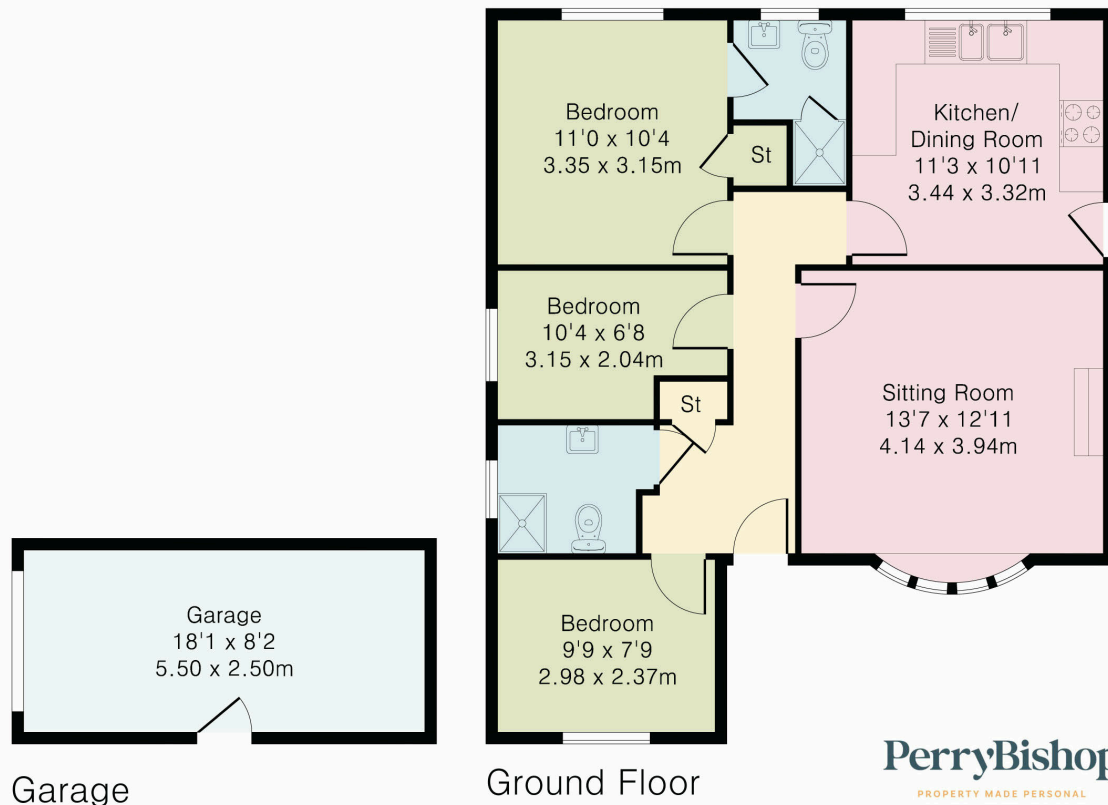
E: [cheltenham@perrybishop.co.uk](mailto:cheltenham@perrybishop.co.uk)



## Approximate Gross Internal Area 886 sq ft - 83 sq m

Ground Floor Area 738 sq ft – 69 sq m

Garage Area 148 sq ft – 14 sq m



Although Pink Plan Ltd ensures the highest level of accuracy, measurements of doors, windows and rooms are approximate and no responsibility is taken for error, omission or misstatement. These plans are for representation purposes only as defined by RICS code of measuring practise. No guarantee is given on total square footage of the property within this plan. The figure icon is for initial guidance only and should not be relied on as a basis of valuation.



140 Bath Road, Cheltenham, Gloucestershire, GL53 7NG

T: 01242 246980

E: cheltenham@perrybishop.co.uk

[perrybishop.co.uk](http://perrybishop.co.uk)

**ID Checks:** Please advise that we charge an admin fee of £25.00 for each individual and £40.00 for a joint purchase when purchasing from us which is payable on a non-refundable basis at the start of the transaction.  
**Disclaimer:** These particulars should not be relied upon as statement or representation of fact and do not constitute part of an offer or contract. The seller does not make or give, nor do we or our employees have the authority to make or give any representation or warranty in relation to this property. We would strongly recommend that all the information we provide about the property is verified by yourself on inspection. We have not carried out a survey nor have we tested any appliances, services or specific fittings at the property. We work with a number of partner companies that pay an average referral fee of £100.00. For specific information please contact your local branch.

Gloucestershire • Oxfordshire • Wiltshire

