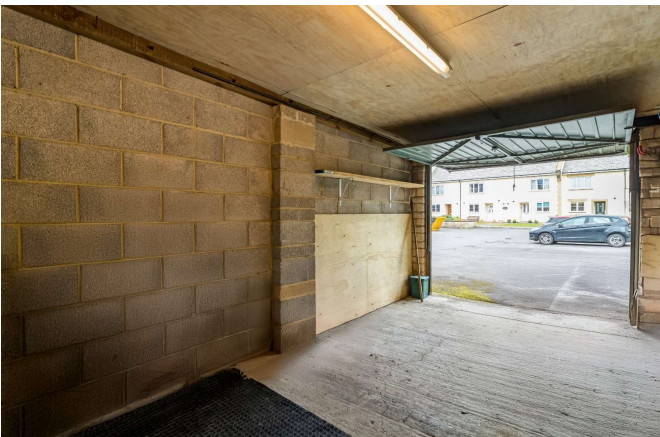


PerryBishop

PROPERTY MADE PERSONAL

London Road, Cirencester, Gloucestershire, GL7 2PU



- 2 bedrooms ● Ground floor apartment ● Grade II listed ● Town centre location ● Garage and off street parking
- No onward chain ● EPC C

London Road

Cirencester

Key Features



2
Bedrooms



1
Bathroom



1
Reception

About the property

A spacious two-bedroom ground floor apartment set within an impressive Grade II listed building, ideally located just a short walk from Cirencester town centre.

The property opens into an entrance hall providing access to all rooms. To the front, a bright and generously sized living room features a charming fireplace and built-in storage, creating a comfortable and inviting space.

The modern kitchen is well-equipped with a range of wall and base units, and includes a freestanding fridge/freezer, dishwasher, and integrated oven, hob, and extractor.

The shower room is fitted with a large shower, wash basin, and WC.

To the rear are two bedrooms: a good-sized double with built-in wardrobes and direct access to the private garden, and a second room ideal as a single bedroom or home office.

Externally, the property benefits from its own private garden with gated access. A single garage which is accessible both from the garden and externally and offers power and lighting, making it suitable for storage or workshop use. The property also includes one allocated parking space.

Amenities

The market town of Cirencester dates back to Roman times and is often referred to as the 'Capital of the Cotswolds'. It is ideally located with the M4, M5 and M40/A40, the mainline train station at Kemble and excellent bus and coach links all within easy reach.

Cirencester benefits from high street stores, independent specialist retailers, a weekly market and there are a number of delightful bistros, cafes, wine bars and public houses to suit all tastes.

Cirencester also boasts a cottage hospital, a leisure centre and a lovely outdoor swimming pool, open from May to September. Other sports are fully catered for including golf, tennis, riding, football, rugby and cricket.

Additional Information

Additional information that may affect your decision to purchase this property is on our website under the property listing or on request from the office.

This includes: Broadband speed and mobile phone signal, flood risk, and area information.

We also ask our clients about known legal aspects such as rights of way, restrictions, and accessibility information.

Directions

From the Market Place in Cirencester town centre, proceed into Dyer Street and continue on to the traffic lights. Carry on straight ahead at the traffic lights and Oxford House can be found on the left hand side, just past the pedestrian crossing.

What 3 Words

[intruders.rails.trumpet](#)

Services & Tenure

Tenure - Leasehold
Electricity - Mains Supply
Water - Mains Supply
Sewerage - Mains Supply
Heating - Electric



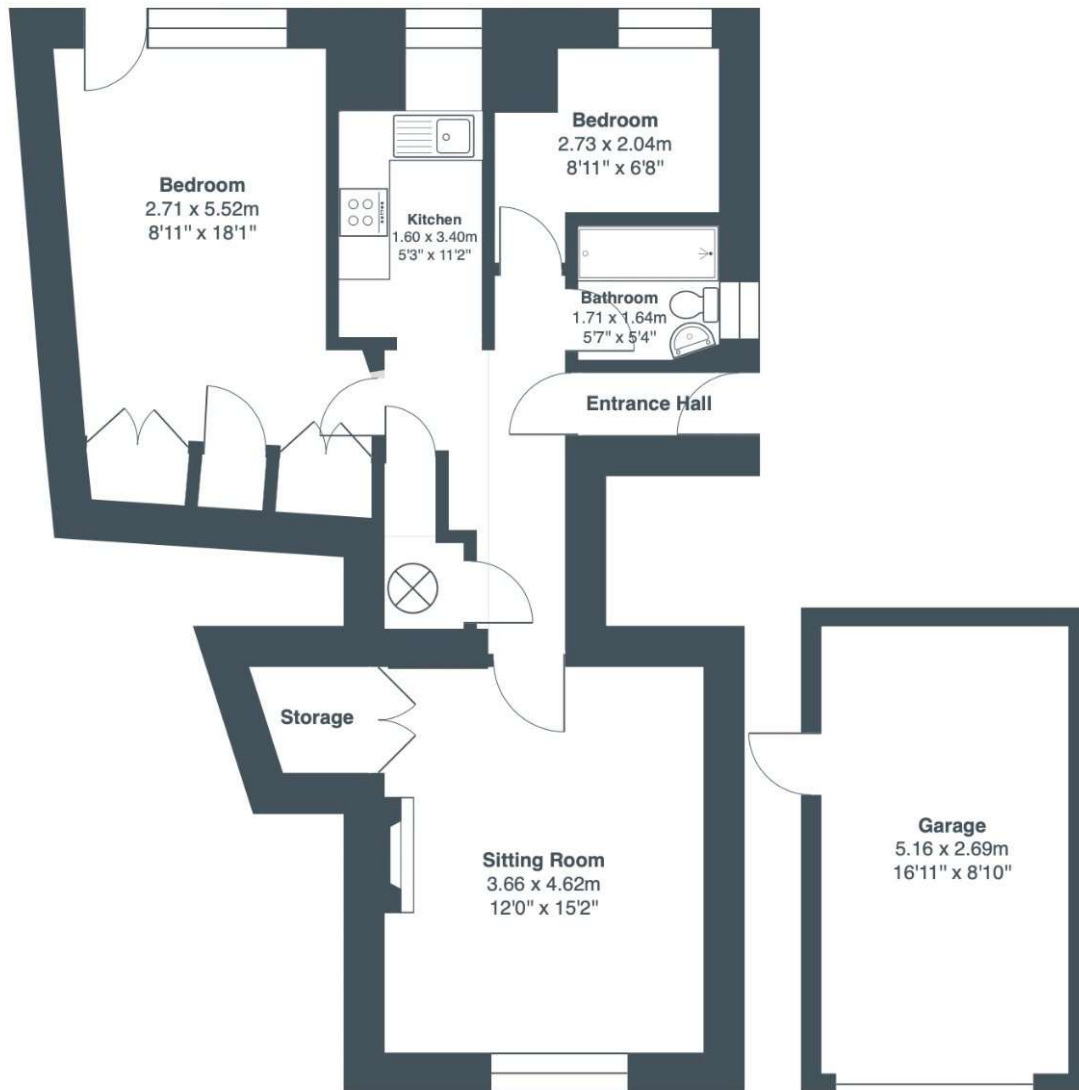


Local Authority
Cotswold District Council
Council tax Band - B

Our reference
CIR230125
1st May 2026

We'd love to hear from you
2 Silver Street, Cirencester, Gloucestershire, GL7 2BL
T: 01285 655355
E: cirencester@perrybishop.co.uk





Total Area: 82.8 m² ... 891 ft²

All measurements are approximate and for display purposes only

PerryBishop

PROPERTY MADE PERSONAL

perrybishop.co.uk

ID Checks: Please advise that we charge an admin fee of £25.00 for each individual and £40.00 for a joint purchase when purchasing from us which is payable on a non-refundable basis at the start of the transaction. **Disclaimer:** These particulars should not be relied upon as statement or representation of fact and do not constitute part of an offer or contract. The seller does not make or give, nor do we or our employees have the authority to make or give any representation or warranty in relation to this property. We would strongly recommend that all the information we provide about the property is verified by yourself on inspection. We have not carried out a survey nor have we tested any appliances, services or specific fittings at the property. We work with a number of partner companies that pay an average referral fee of £100.00. For specific information please contact your local branch.

Gloucestershire • Oxfordshire • Wiltshire

