

Lime Cottage



Semi Detached • Substantial Garden • Sunset Views • Garage • Off-street parking • Land surrounding • Perfect for hosting • Potential to extend • EPC D

Lime Cottage

Key Features



4
Bedrooms



2
Bathrooms



2
Receptions

About the property

Tucked away on the peaceful outskirts of Upper Minety, Lime Cottage is an attractive four-bedroom semi-detached home set on a generous and beautifully maintained plot. Offering a perfect blend of character and comfort, this delightful cottage is ideal for families or anyone looking to enjoy village life in a picturesque rural setting.

The ground floor welcomes you with a spacious and inviting sitting room, where a wood-burning stove and exposed beams create a warm and cosy atmosphere-perfect for quiet evenings or relaxed entertaining. The heart of the home lies in the stylish kitchen/diner, a great social space ideal for hosting family and friends, which flows seamlessly into the bright and airy conservatory, bringing the outside in.

Outside, the garden is truly impressive-extensive and thoughtfully arranged, it provides numerous spots to relax, entertain, or get stuck into some gardening. Whether you're enjoying summer evenings with guests or simply unwinding in a quiet corner, there's space here for every

Additional Information

Additional information that may affect your decision to purchase this property is on our website under the property listing or on request from the office. This includes Broadband speed and mobile phone signal, flood risk, and area information. We also ask our clients about known legal aspects such as rights of way, restrictions, and accessibility information.

Amenities

Upper Minety is a popular and well located village, quietly situated between the attractive market towns of Cirencester and Malmesbury, with good access to Swindon and junctions 15, 16 and 17 of the M4 motorway. The village has a parish church whilst the neighbouring village of Minety offers two pubs, a community shop and primary school. There are further primary schools, shops and pubs/restaurants in the neighbouring villages of Crudwell, Oaksey, and Ashton Keynes. The village is also well situated for the Cotswold Water Park. More comprehensive shopping is available at Cirencester, Malmesbury and Swindon. There are main line rail services to London Paddington from Swindon and Kemble stations.

Directions

Start at our office in Cirencester.
Head west on Silver Street and turn left onto the A429 (Tetbury Road).
At the roundabout, take the 1st exit onto the A419 slip road toward Swindon/Stroud.
Merge onto the A419 and continue for about 2 miles.
Take the exit toward B4696/Ashton Keynes/South Cerney.
At the roundabout, take the 3rd exit onto Spine Road East/B4696.
Continue on B4696 for approximately 4 miles, passing through Ashton Keynes.
Turn left onto the B4040 toward Minety.
After about 1.5 miles, turn right onto Silver Street.
Continue on Silver Street, which leads into Upper Minety.
Look for Lime Cottage on your left, near landmarks such as St Leonard's Church and Manor Cottages.

What3Words /// study.dices.finer

Services & Tenure

The tenure is freehold,

Mains water, drainage, and electricity are understood to be connected. The property is on oil.

Local Authority

Wiltshire District Council,

Council Tax Band D

Our reference

CIR/TJ/CDH/21052025

We'd love to hear from you

2 Silver Street, Cirencester, Gloucestershire, GL7 2BL
T: 01285 655355
E: cirencester@perrybishop.co.uk

what the owner said

"It is a great house for socialising in, we've had some wonderful evenings entertaining"

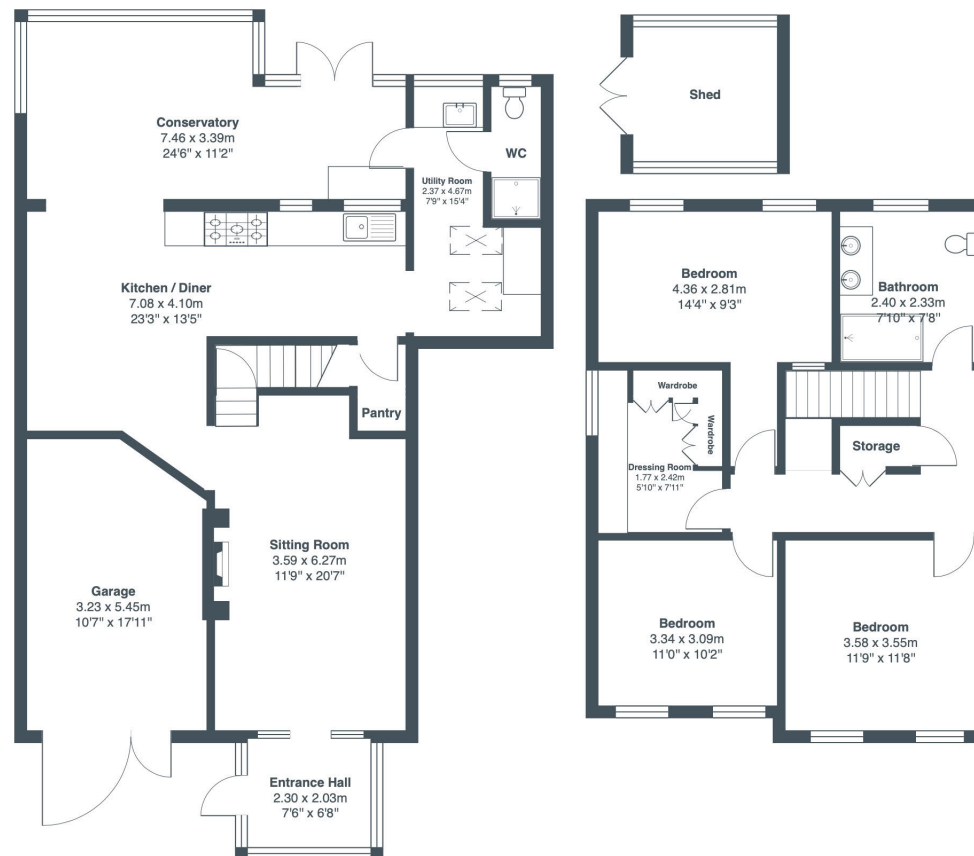
"We love the peace and quiet, the garden is an amazing space to relax"

"We're really sad to see it go, but it's time for our next chapter as a Family."









Total Area: 181.2 m² ... 1950 ft²

All measurements are approximate and for display purposes only

PerryBishop

PROPERTY MADE PERSONAL

2 Silver Street, Cirencester, Gloucestershire, GL7 2BL

T: 01285 655355

E: cirencester@perrybishop.co.uk

perrybishop.co.uk

ID Checks: Please advise that we charge an admin fee of £25.00 for each individual and £40.00 for a joint purchase when purchasing from us which is payable on a non-refundable basis at the start of the transaction.

Disclaimer: These particulars should not be relied upon as statement or representation of fact and do not constitute part of an offer or contract. The seller does not make or give, nor do we or our employees have the authority to make or give any representation or warranty in relation to this property. We would strongly recommend that all the information we provide about the property is verified by yourself on inspection. We have not carried out a survey nor have we tested any appliances, services or specific fittings at the property. We work with a number of partner companies that pay an average referral fee of £100.00. For specific information please contact your local branch.

Gloucestershire • Oxfordshire • Wiltshire

