

# PerryBishop

PROPERTY MADE PERSONAL

**Bromsgrove**, Faringdon, Oxfordshire SN7 7JF



Semi-detached town house • Four bedrooms • Bathroom and shower room • Fully fitted contemporary kitchen/diner • Rent Potential £1600 pcm, Potential 5.9% yield • Living room • Garden with planting • Energy-efficient combination boiler • EPC B



## Key Features



4  
Bedrooms



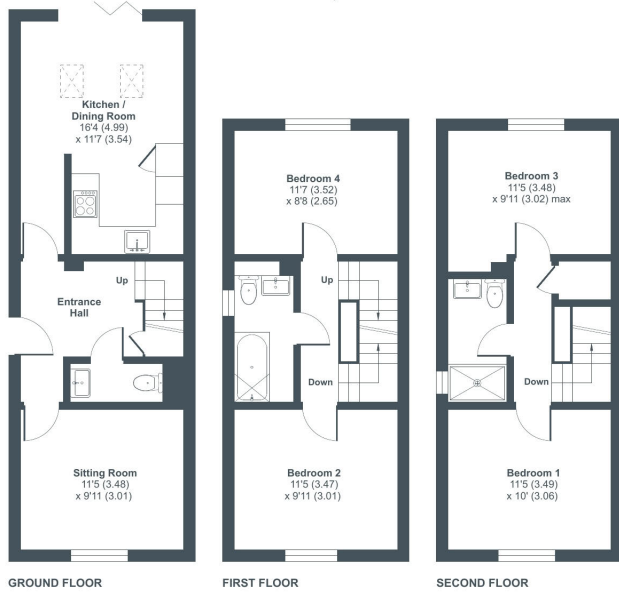
2  
Bathrooms



2  
Receptions

## Bromsgrove, Faringdon, Oxfordshire, SN7

Approximate Area = 1096 sq ft / 101.8 sq m  
For identification only - Not to scale



Floor plan produced in accordance with RICS Property Measurement 2nd Edition, incorporating International Property Measurement Standards (IPMS2 Residential). © richrecom 2024. Produced for Perry Bishop. REF: 1207822

PerryBishop

## About the property

One of a pair of striking new build townhouses situated in the heart of Faringdon which will appeal to many, proudly sitting adjacent to Ferndale School, which has recently been transformed into high quality apartments, with old and new blending sympathetically together.

These splendid three-storey homes boast desirable specifications, contemporary finishes and private parking, and are conveniently located a short walk from Faringdon's historic town centre.

## Broadband and Mobile Coverage

For an indication of specific broadband and mobile speed and supply or coverage in the area we recommend the Broadband and mobile coverage checker - Ofcom.

## Amenities

The historic market town of Faringdon, dating back at least to the 12th century, has a thriving community and amenities such as the Leisure Centre, Library, Faringdon Community College, The Elms and Folly View primary schools as well as The Old Station Nursery, doctors' and dentists' surgeries and The Place Family Centre. Buses travel from the town to private schools at Abingdon. The town now boasts three large supermarkets.

Faringdon is also ideally positioned for the A420, leading to the A34, M40 and M4 and mainline railway services from Swindon, Oxford, Oxford Parkway and Didcot Parkway. There is a frequent bus service through the town from Swindon to Oxford and back, linking to rail services and airports.

The Tower on Folly Hill was built by Lord Berners in 1935 and affords panoramic views across four counties. For over 20 years, the town has been twinned with Le Mêle-sur-Sarthe in France and in 2004, Faringdon became the first Fairtrade town in the South East of England.

## Directions

From Faringdon Market Place, proceed through Cornmarket and up Marlborough Street. At the roundabout, turn left into Station Road and left again into Bromsgrove. Follow the one-way system round to the left and the property can be found on the right hand side, just beyond the turning to Hart Avenue.

What3Words: ///chill.mouth.cocoons

## Services & Tenure

The tenure is Freehold. All mains services are understood to be connected. There is a service charge of £571 per annum for the upkeep of common areas of the estate.

## Local Authority

Vale of White Horse District Council

Council Tax Band D

## Our reference

FAR/HD/MS/10102024

## We'd love to hear from you

16 Market Place, Faringdon, Oxfordshire, SN7 7HP  
T: 01367 240356  
E: faringdon@perrybishop.co.uk



**ID Checks:** Please advise that we charge an admin fee of £25.00 for each individual and £40.00 for a joint purchase when purchasing from us which is payable on a non-refundable basis at the start of the transaction.  
**Disclaimer:** These particulars should not be relied upon as statement or representation of fact and do not constitute part of an offer or contract. The seller does not make or give, nor do we or our employees have the authority to make or give any representation or warranty in relation to this property. We would strongly recommend that all the information we provide about the property is verified by yourself on inspection. We have not carried out a survey nor have we tested any appliances, services or specific fittings at the property. We work with a number of partner companies that pay an average referral fee of £100.00. For specific information please contact your local branch.

