

## Coxwell Road, Faringdon, Oxfordshire, SN7 7JX



Mature detached bungalow • Three bedrooms • Mature non estate location • Extended fitted kitchen/dining room • Utility and cloakroom • Private, sunny rear garden • Well located for bus service to Oxford and Swindon • No onward chain • EPC E

# Coxwell Road,

Faringdon, Oxfordshire, SN7 7JX

## Key Features



3  
Bedrooms



2  
Bathrooms



1  
Reception

## About the property

A mature detached bungalow situated in a popular residential area close to a bus stop with routes into the town centre, Oxford and Swindon.

The property is offered for sale with the advantage of No Onward Chain and offers flexible accommodation including three bedrooms, the master bedroom with en-suite shower room, a family shower room, sitting room and a well fitted kitchen/dining room with cloakroom and utility beyond. Two of the bedrooms benefit from underfloor heating.

The property is majority UPVC double glazed and has a gas heating system with all mains services connected. The front garden provides off road parking for several cars whilst the rear garden enjoys a sunny south/westerly facing garden which is extremely private.

## Amenities

The historic market town of Faringdon, dating back at least to the 12th century, has a thriving community and amenities such as the Leisure Centre, Library, Faringdon Community College, Junior and Infant schools as well as The Old Station Nursery, doctors' and dentists' surgeries and a Family Centre. Buses travel from the town to private schools at Abingdon. The town now boasts three large supermarkets.

Faringdon is also ideally positioned for the A420, leading to the A34, M40 and M4 and mainline railway services from Swindon, Oxford, Oxford Parkway and Didcot Parkway. There is a frequent bus service through the town from Swindon to Oxford and back, linking to rail services and airports.

The Tower on Folly Hill was built by Lord Berners in 1935 and affords panoramic views across four counties. For over 20 years, the town has been twinned with Le Mêle-sur-Sarthe in France and in 2004, Faringdon became the first Fairtrade town in the South East of England.

## Directions

From the centre of Faringdon head towards Coxwell Road and the property can be found on the right hand side after the right hand turn into Highworth Road. The property can be identified by the agent's for sale board.

What Three Words: narrowest.pleasing.heat

## Services & Tenure

The tenure is Freehold. All mains services are connected.

## Local Authority

Vale of White Horse District Council

Council Tax Band: E

## Our reference

FAR/SB/RN/06062023

## We'd love to hear from you

16 Market Place, Faringdon, Oxfordshire, SN7 7HP

T: 01367 240356

E: faringdon@perrybishop.co.uk











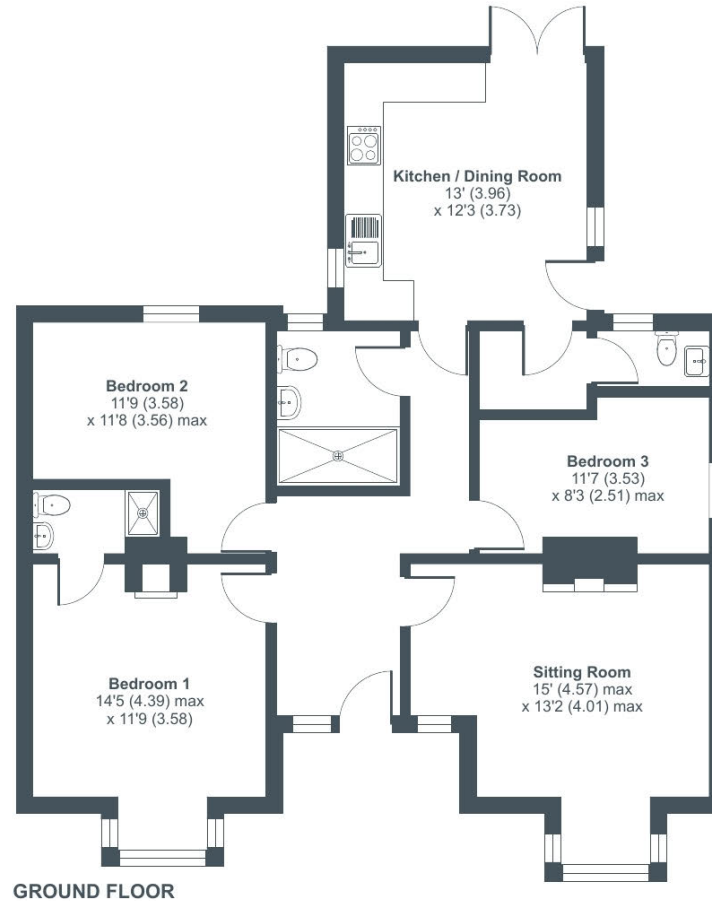




# Coxwell Road, Faringdon, SN7

Approximate Area = 955 sq ft / 88.7 sq m

For identification only - Not to scale



GROUND FLOOR



Floor plan produced in accordance with RICS Property Measurement Standards incorporating International Property Measurement Standards (IPMS2 Residential). © nchecon 2023. Produced for Perry Bishop. REF: 990821



16 Market Place, Faringdon, Oxfordshire, SN7 7HP

T: 01367 240356

E: [farindon@perrybishop.co.uk](mailto:farindon@perrybishop.co.uk)

[perrybishop.co.uk](https://perrybishop.co.uk)

**Disclaimer:** These particulars should not be relied upon as statement or representation of fact and do not constitute part of an offer or contract. The seller does not make or give, nor do we or our employees have the authority to make or give any representation or warranty in relation to this property. We would strongly recommend that all the information we provide about the property is verified by yourself on inspection. We have not carried out a survey nor have we tested any appliances, services or specific fittings at the property. We work with a number of partner companies that pay an average referral fee of £100.00. For specific information please contact your local branch.

Gloucestershire • Oxfordshire • Wiltshire

