

Richings Place, Faringdon, Oxfordshire, SN7 7QQ



Immaculately presented ● Four double bedrooms ● Garage and parking ● Landscaped gardens ● Remaining NHBC warranty ● EPC B ●

Richings Place,

Faringdon, Oxfordshire, SN7 7QQ

Key Features



4

Bedrooms



2

Bathrooms



2

Receptions

About the property

This impressive four-bedroom home benefits from many upgrades and is turnkey ready.

Upon entering you are welcomed into a spacious hallway with stairs to the first floor, two storage cupboards for coats and shoes as well as a downstairs cloakroom.

On the left is a triple aspect sitting room, flooded with natural light with ample space for sofa's and arm chairs. Back in the hallway and on the right is the kitchen/dining room. The kitchen is fitted with a range of wall and base units including intergraded white goods; fridge/freezer, dishwasher, double oven, and gas hobs. The counter tops have also been upgraded to quartz. From here you also have access into the utility room fitted with further units as well as space and plumbing for washing machine and tumble drier.

To the first floor are four bedrooms, all of which can hold a double bed. The main bedroom benefits from an en-suite shower room and built in wardrobes, while the other bedrooms are serviced by the family bathroom fitted with a modern white suite.

Externally the garden has been beautifully landscaped, with a large patio running along the back of the house and down the side towards the parking. This then steps down to a lawned area planted with a range of cherry blossom, silver birch and Amelanchier trees to add interest. There is also a composite decking section in the top corner which is perfect for a larger table and chairs. Side access then takes you round to the driveway parking and single garage at the back of the property.

Amenities

The historic market town of Faringdon, dating back at least to the 12th century, has a thriving community and amenities such as the Leisure Centre, Library, Faringdon Community College, The Elms and Folly View primary schools as well as The Old Station Nursery, doctors' and dentists' surgeries and The Place Family Centre. Buses travel from the town to private schools at Abingdon. The town now boasts three large supermarkets.

Faringdon is also ideally positioned for the A420, leading to the A34, M40 and M4 and mainline railway services from Swindon, Oxford, Oxford Parkway and Didcot Parkway. There is a frequent bus service through the town from Swindon to Oxford and back, linking to rail services and airports.

The Tower on Folly Hill was built by Lord Berners in 1935 and affords panoramic views across four counties. For over 20 years, the town has been twinned with Le Mêle-sur-Sarthe in France and more recently with Konigstein im Taunus in Germany. In 2004, Faringdon became the first Fairtrade town in the South East of England.

Additional Information

Additional information that may affect your decision to purchase this property is on our website under the property listing or on request from the office.

This includes: Broadband speed and mobile phone signal, flood risk, and area information.

We also ask our clients about known legal aspects such as rights of way, restrictions, and accessibility information.

Directions

From Faringdon Market Place, proceed through Cornmarket and up Marlborough Street. Continue over the roundabout into Coxwell Street/Coxwell Road and turn right into Highworth Road, follow the road taking the turning onto Stevens Way, half way up the hill take the right hand turn onto Richings Place where the property can be found on the right hand side.

What 3 Words ///quilting.grownup.hurray

Services & Tenure

Tenure – Freehold

Service Charge - £206.00 pa

Electricity - Mains Supply

Water – Mains Supply

Sewerage - Mains Supply

Heating - Gas

Local Authority

Vale Of White Horse District Council

Council Tax Band - E

Our reference

FAR250462

27th February 2026

We'd love to hear from you

16 Market Place, Faringdon, Oxfordshire, SN7 7HP

T: 01367 240356

E: faringdon@perrybishop.co.uk







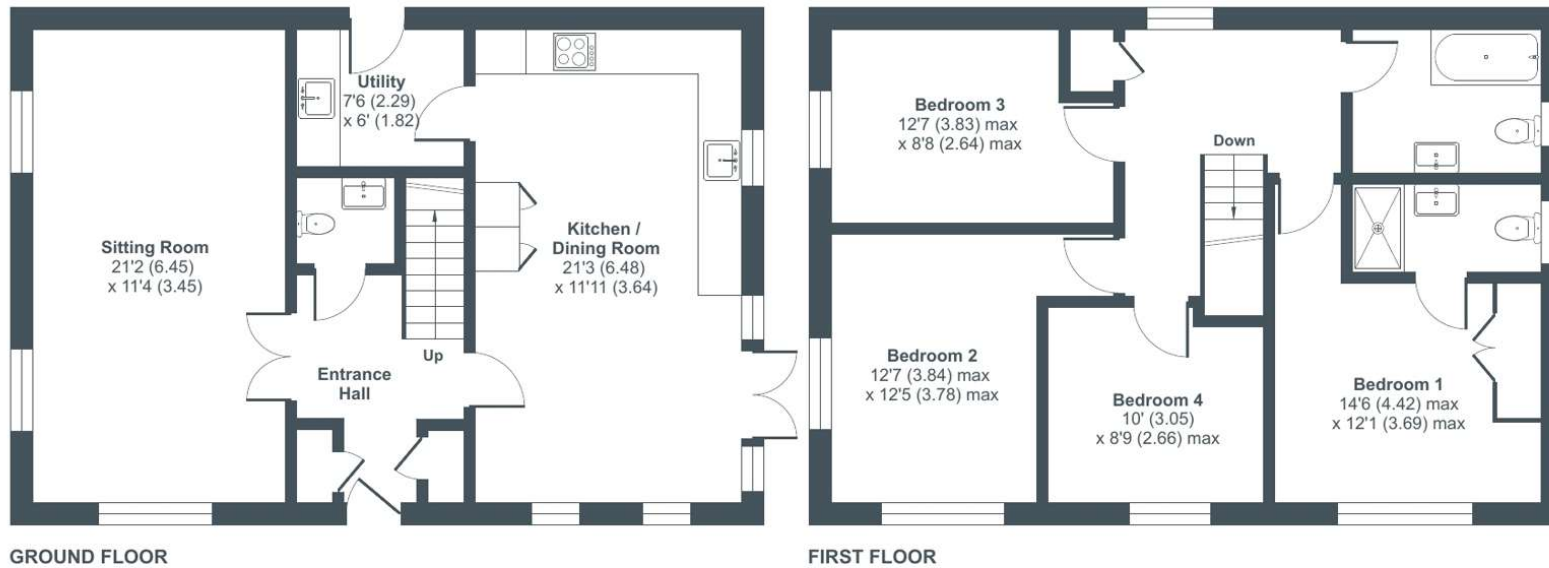
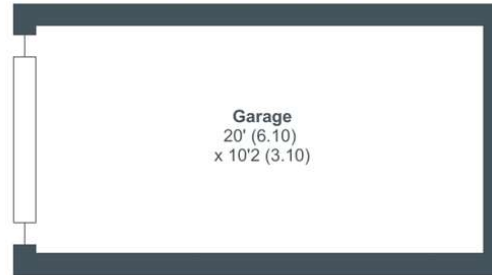
Richings Place, Faringdon, Oxfordshire, SN7

Approximate Area = 1344 sq ft / 124.8 sq m

Garage = 304 sq ft / 28.2 sq m

Total = 1648 sq ft / 153 sq m

For identification only - Not to scale



Floor plan produced in accordance with RICS Property Measurement 2nd Edition, Incorporating International Property Measurement Standards (IPMS2 Residential). © ncthecom 2026. Produced for Perry Bishop. REF: 1416538



perrybishop.co.uk

ID Checks: Please advise that we charge an admin fee of £25.00 for each individual and £40.00 for a joint purchase when purchasing from us which is payable on a non-refundable basis at the start of the transaction. **Disclaimer:** These particulars should not be relied upon as statement or representation of fact and do not constitute part of an offer or contract. The seller does not make or give, nor do we or our employees have the authority to make or give any representation or warranty in relation to this property. We would strongly recommend that all the information we provide about the property is verified by yourself on inspection. We have not carried out a survey nor have we tested any appliances, services or specific fittings at the property. We work with a number of partner companies that pay an average referral fee of £100.00. For specific information please contact your local branch.

