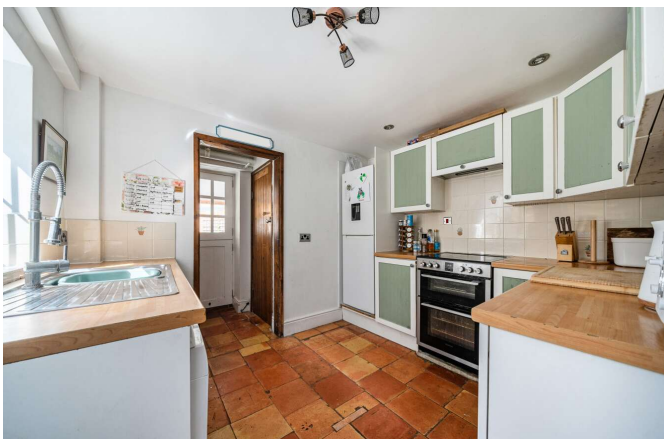


PerryBishop

PROPERTY MADE PERSONAL

Wakes Place, Longcot, Faringdon, Oxfordshire, SN7 7TQ



- Three double bedrooms
- Parking
- Set down a private track
- Private garden with raised veg beds
- Set over three floors
- EPC D

Wakes Place

Longcot

Key Features



3
Bedrooms



1
Bathroom



2
Receptions

About the property

Set down a private track you will find Wakes Place cottages, offering great privacy, character features but modern living.

Upon entering you are welcomed into a porch with space for coats and shoes, this then flows into the living room, centred around a fireplace with ample space for furniture, as well as an understairs storage cupboard. There are also doors out to the garden. The kitchen is fitted with a range of units as well as space for white goods, there is then a downstairs cloakroom and utility space for washing machine. At the back of the house is a conservatory, fitted with a new roof, making it a useable space throughout the year, there is also further door onto the garden from here.

To the first floor are two double bedrooms, both benefitting from views over the village, between them is the family bathroom fitted with a modern white suite as well as his and hers sinks.

The second floor has another double bedroom with eaves storage down the side, with Velux windows for light.

Externally the garden offers great privacy, with a patio section closest to the house, then mainly laid to lawn. There are raised veg beds down one end as well as a shed for storage.

Amenities

Longcot is a picturesque village lying close to the edge of the historic Ridgeway and Uffington White Horse, with attractive surrounding countryside. The village benefits from a pub (The King and Queen) and a very popular and thriving Church of England primary school.

The A420 provides a direct road link to Oxford (and M40) and Swindon (and M4), both of which have fast mainline railway links to London. Shrivensham and Watchfield nearby offer a range of shops and restaurants, public houses and a doctor's surgery in Shrivensham. There are three supermarkets and many other amenities in the market town of Faringdon, just over four miles away.

Additional Information

Additional information that may affect your decision to purchase this property is on our website under the property listing or on request from the office.

This includes: Broadband speed and mobile phone signal, flood risk, and area information.

We also ask our clients about known legal aspects such as rights of way, restrictions, and accessibility information.

Directions

From Faringdon, take the A420 towards Swindon and after a couple of miles turn left after the speed camera, turning is signposted for Longcot. Entering the village, the property can be found down a long driveway just after the turning into Priory Mead.

What 3 Words

[warblers.roadshow.betrayal](#)





Services & Tenure

Tenure - Freehold
Electricity - Mains Supply
Water – Mains Supply
Sewerage - Mains Supply
Heating - Gas

Local Authority

Vale Of White Horse District Council
Council Tax Band - C

Our reference

FAR260121
14th April 2026

We'd love to hear from you

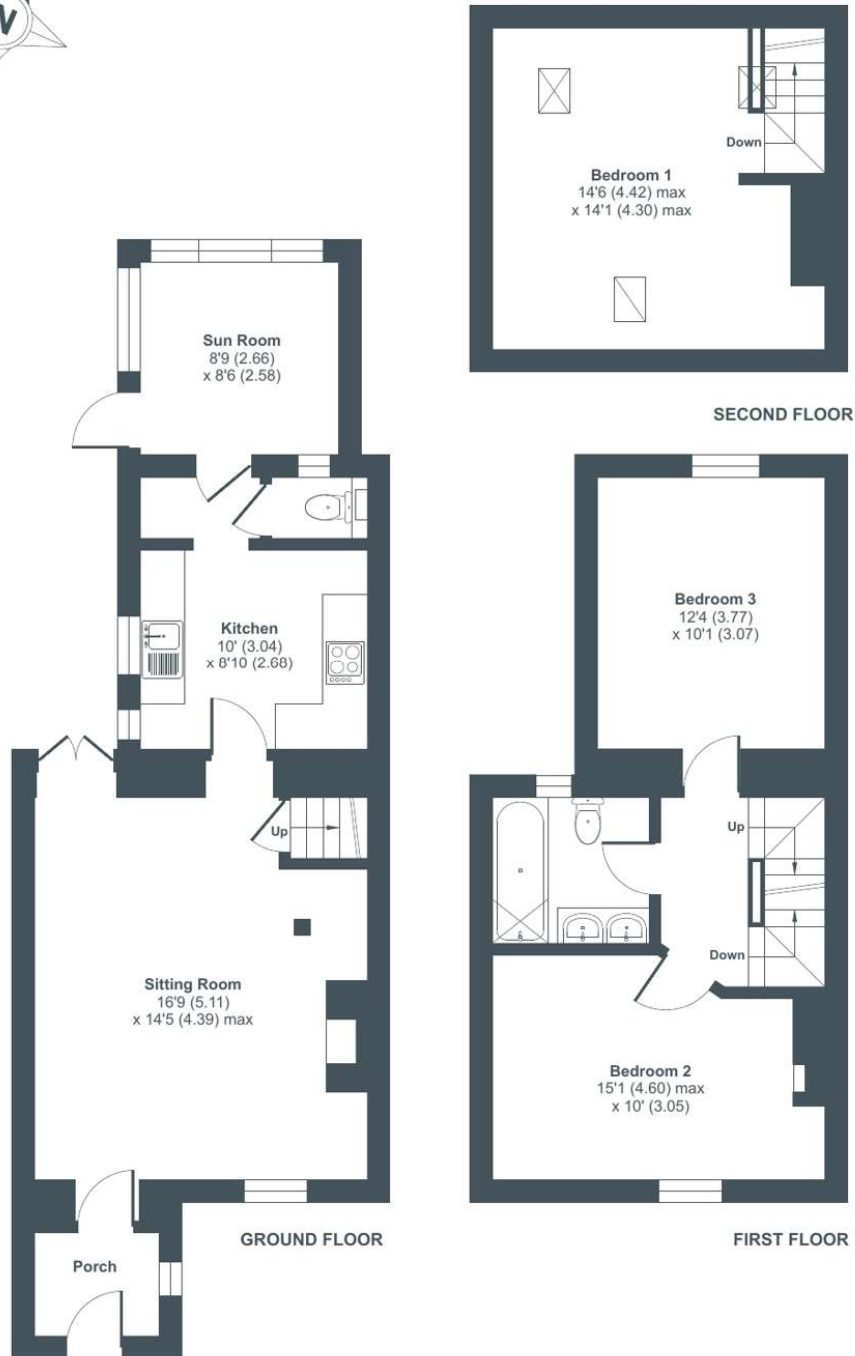
16 Market Place, Faringdon, Oxfordshire, SN7 7HP
T: 01367 240356
E: farington@perrybishop.co.uk



Wakes Place, Longcot, Faringdon, SN7

Approximate Area = 1102 sq ft / 102.3 sq m

For identification only - Not to scale



Floor plan produced in accordance with RICS Property Measurement 2nd Edition, Incorporating International Property Measurement Standards (IPMS2 Residential). ©n3hocom 2026. Produced for Perry Bishop. REF: 1437222



perrybishop.co.uk

ID Checks: Please advise that we charge an admin fee of £25.00 for each individual and £40.00 for a joint purchase when purchasing from us which is payable on a non-refundable basis at the start of the transaction. **Disclaimer:** These particulars should not be relied upon as statement or representation of fact and do not constitute part of an offer or contract. The seller does not make or give, nor do we or our employees have the authority to make or give any representation or warranty in relation to this property. We would strongly recommend that all the information we provide about the property is verified by yourself on inspection. We have not carried out a survey nor have we tested any appliances, services or specific fittings at the property. We work with a number of partner companies that pay an average referral fee of £100.00. For specific information please contact your local branch.

Gloucestershire • Oxfordshire • Wiltshire

