

PerryBishop

PROPERTY MADE PERSONAL

Plot 3, Hawthorne Close Down Ampney, Gloucestershire, GL7 5PQ



Exciting First Time Buyer Opportunity! • A unique First Home scheme with a 30% discount on Market Value • Plot 3 is a one bedroom First floor apartment • Energy efficient money saving specification including PV panels • Garden and allocated parking • EPC A

Guide Price: **£182,000**

perrybishop.co.uk   



Hawthorne Close is a unique small development of four First Home Scheme properties.

Plot 3 is a one bedroom First floor apartment with a private garden space and allocated parking space.

This outstanding arrangement of 4 terraced homes consisting of 1x two bedroom apartments, a mid terrace - 2 bedroom cottage and a 1 bedroom bungalow.

Plot 3 Dimensions:
Kitchen/Living area
15'5" x 17'x1"
Bedroom:
12'11 x 10'9"

All homes enjoy gardens and allocated parking spaces.
PV panels with air source heat pumps.

The First Home Scheme is a UK government initiative aimed at helping first-time buyers purchase a home at a discounted price.

Please contact us to discuss the First Homes criteria and to discuss eligibility.

Location

Down Ampney is a delightful village located between Cirencester and Swindon, near the famous Cotswold Water Park. Facilities include a Primary School, Post Office/Shop, Play Area, Tennis Courts and the Village Hall and Green. Nestled in glorious countryside, Down Ampney offers a taste of 'The Good Life' and is just perfect for outdoor pursuits such as cycling, riding or walking. Cricklade's North Meadow is a National Nature Reserve whilst the Cotswold Water Park offers all sorts of adventure sport, from water skiing and sailing to the more genteel pastimes of fishing and bird watching.

Approximately 8 miles away the 'Capital of the Cotswolds' – Cirencester – is a lively market town boasting High Street stores, independent specialist boutiques and a weekly market. You'll be spoiled for choice in terms of delis, bistros, restaurants and pubs.

For travel, the mainline station at Swindon allows direct trains to London and the South West, Kemble station and motorway connections via the A419 to M4 and M5.

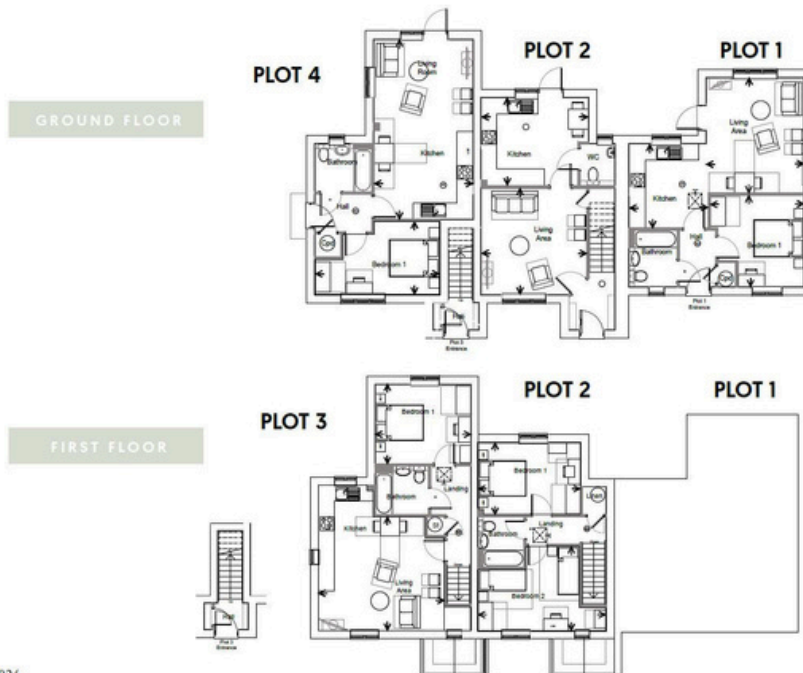
About the Developer Cotswold Homes are a family run business with several NHBC Pride in the Job Award winning site managers and an experienced, stable team dedicated to helping you through the entire process - from initial contact to the day you step over the threshold.

Eligibility

- They meet the First Homes Local Connection Criteria
- The purchaser is an armed services member
- The purchaser is a key worker

We'd love to hear from you

2 Silver Street, Cirencester, Gloucestershire, GL7 2BL
T: 01285 646770
E: landandnewhomes@perrybishop.co.uk



09.10.2024

ID Checks: Please advise that we charge an admin fee of £25.00 for each individual and £40.00 for a joint purchase when purchasing from us which is payable on a non-refundable basis at the start of the transaction.
Disclaimer: These particulars should not be relied upon as statement or representation of fact and do not constitute part of an offer or contract. The seller does not make or give, nor do we or our employees have the authority to make or give any representation or warranty in relation to this property. We would strongly recommend that all the information we provide about the property is verified by yourself on inspection. We have not carried out a survey nor have we tested any appliances, services or specific fittings at the property. We work with a number of partner companies that pay an average referral fee of £100.00. For specific information please contact your local branch.

