

Redeemed Christian Church Of God 21-23 Stoke Croft, Bristol, BS1 3PY



Existing church premises with meeting rooms and ancillary accommodation • Substantial site with development potential (STPP) • Prime, central location • Informal tender sale • Open Viewing - Wednesday 17th September from 11am to 12pm

Guide Price
£925,000

Redeemed Christian Church Of God

21-23 Stoke Croft, Bristol, BS1 3PY

Set in the heart of Stokes Croft, Bristol's most vibrant and eclectic district, this distinctive property is home to RCCG Glory Of God Parish. With its central location, high visibility, and adaptable layout, it offers a rare opportunity to acquire a landmark building that functions not only as a place of worship but as a thriving community hub.

This substantial freehold property is currently arranged as a church with associated community facilities, it offers extensive and adaptable accommodation across two floors, making it suitable for a wide range of occupiers, from religious and community groups to educational or leisure uses, subject to the necessary consents.

On the ground floor, a large open-plan space of approximately 44ft by 52ft provides an excellent, bright area ideal for childcare, education, or conversion to alternative uses such as studios or offices, currently used as a children's nursery. This level also benefits from a fitted kitchen, several offices, storerooms and modern WC facilities and small outside area, giving it both functionality and flexibility.

The first floor is centred around an impressive church hall measuring 38ft by 73ft. With high ceilings and generous proportions, it is ideally suited to large gatherings, performances, conferences, or events. Surrounding this main space are a number of smaller rooms that can be used as classrooms, offices or meeting spaces, together with additional WCs and storage.

The overall layout strikes a balance between expansive halls for assembly and more private rooms for administration or support services, allowing easy adaptation to a variety of purposes. The property is presented in good condition, with modern amenities and a strong presence on one of Bristol's busiest and most characterful streets.

Stokes Croft is celebrated as the city's creative hub, attracting significant footfall and offering excellent connectivity to the city centre. The building's scale, visibility, and location make it an exceptional opportunity for organisations seeking a distinctive base in Bristol.

Location

Stokes Croft is an area within the City, that sits between Kingsdown and St. Pauls. Filled with dozens of independent retailers, bars, restaurants, arts organisations, community-inspired shops and incredible street art, Stokes Croft has something for everyone.

Directions

What Three Words: spices.weds.recall

Viewings

Open viewing by appointment only on Wednesday 17th September from 11am to 12pm.

Please call the Land team on 01285 646770 to book your appointment.

Please note that we are unable to arrange individual viewings. If you require the services of architects, surveyors, or builders, please ensure they accompany you during the scheduled viewing before submitting your offer.

Town & Country Planning

The present use of the Church is within Class F1 - Learning & Non-Residential Institutions. This would permit the following:-

- a) For the provision of education
- b) For the display of artwork (not for sale or hire)
- c) As a museum
- d) As a public library or public reading room
- e) As a public hall or exhibition hall
- f) For, or in connection with public worship or religious instruction
- g) As a law court

Interested parties should make their own enquiries with Bristol City Council - 0117 922 3000 / www.bristol.gov.uk

Services & Tenure

None of the property is affected by leases and will be sold with freehold title and full vacant possession.

We have not been informed of any onerous covenants or restrictions which materially affect title or use and we have not been informed of any reverter clauses affecting title.

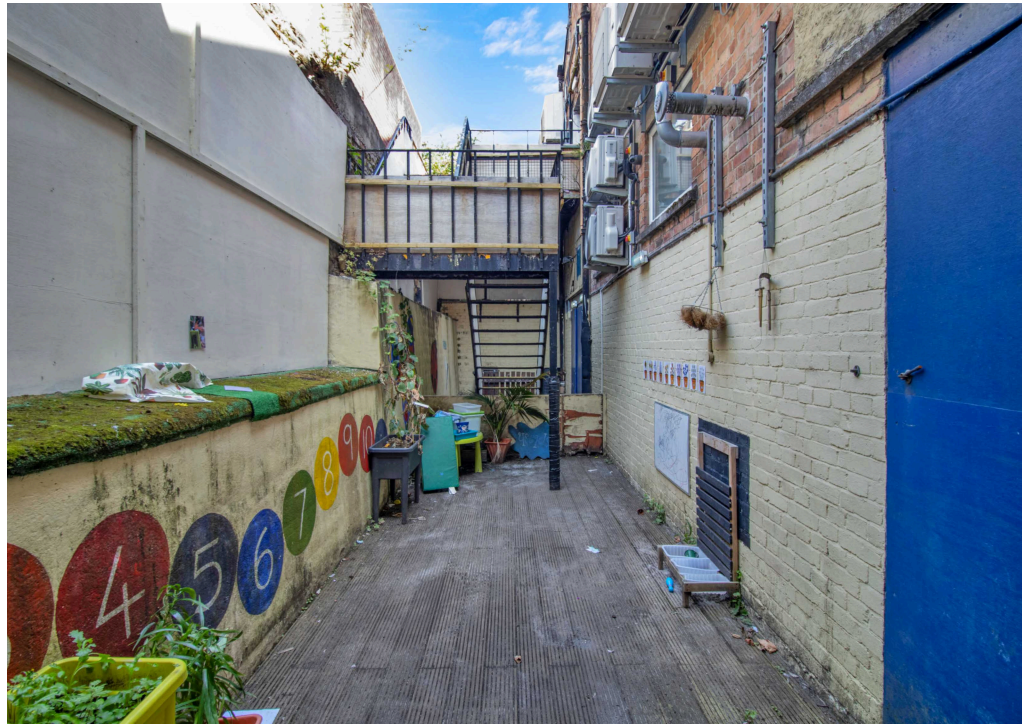
Method of Sale

The property is offered for sale by informal tender, offers must be made in writing no later than 12 noon on Wednesday 1st October 2025.

These should be submitted on the offer form to ensure that all information required is received. Please email your offer to landandnewhomes@perrybishop.co.uk.

It is the bidder's responsibility to ensure that their offer is received by the prescribed deadline, and the vendor is not bound to accept the highest or any offer. A decision will be made asap after the closing date, with all parties that have made an offer being notified accordingly.







Total Area: 792.1 m² 8526 R²
 All measurements are approximate and for display purposes only

PerryBishop
 PROPERTY MADE PERSONAL



2 Silver Street, Cirencester, Gloucestershire, GL7 2BL

T: 01285 646770

E: landandnewhomes@perrybishop.co.uk

perrybishop.co.uk

ID Checks: Please advise that we charge an admin fee of £25.00 for each individual and £40.00 for a joint purchase when purchasing from us which is payable on a non-refundable basis at the start of the transaction.

Disclaimer: These particulars should not be relied upon as statement or representation of fact and do not constitute part of an offer or contract. The seller does not make or give, nor do we or our employees have the authority to make or give any representation or warranty in relation to this property. We would strongly recommend that all the information we provide about the property is verified by yourself on inspection. We have not carried out a survey nor have we tested any appliances, services or specific fittings at the property. We work with a number of partner companies that pay an average referral fee of £100.00. For specific information please contact your local branch.

Gloucestershire • Oxfordshire • Wiltshire

