

Horsley Court Cottage, Horsley Hill, Horsley, Stroud, Gloucestershire, GL6 0PW



Sought after location • Walking distance to primary school • Close to amenities • Flexible living space • Well maintained • Plenty of character • Wood burner • EPC E

Horsley Court Cottage,

Horsley Hill, Horsley, Stroud, Gloucestershire, GL6 OPW

Key Features



3
Bedrooms



2
Bathrooms



2
Receptions

About the property

Located in the picturesque village, this charming period semi-detached house offers a perfect blend of character and modern comfort.

Boasting three bedrooms, this well-maintained property exudes a cosy and inviting atmosphere, making it the perfect place to call home.

There is also the benefit of ample loft storage space above the office/second reception room.

The bright and airy living spaces are ideal for relaxing along with a outside office/workshop, while the well-kept garden provides a tranquil outdoor retreat.

With its homely feel and convenient location, this property offers a wonderful opportunity for those seeking a comfortable and peaceful lifestyle.

Don't miss the chance to make this delightful house your own.

Contact us today to arrange a viewing.

Amenities

Horsley is a small village just outside the Market Town of Nailsworth and offers a local Primary School, village hall & pavilion, recreation field and a 'community shop' a non-profit locally run shop, created for the benefit of local residence.

The near-by popular Market Town of Nailsworth offers coffee shops, cafés and restaurants. Alongside these well regarded eateries are the mouth-watering Williams Fish Market & Food Hall and renowned Hobbs House Bakery, plus a wonderfully diverse selection of fashionable boutiques and shops. There are also several high-ranking local private and public sector schools, plus full amenities.

There are plenty of leisure activities on offer too including a new leisure centre with members' club, golf courses, riding stables, bowls club, gliding and polo clubs.

Broadband and Mobile Coverage

For an indication of specific broadband and mobile speed and supply or coverage in the area we recommend the Broadband and mobile coverage checker – Ofcom.

Directions

From our Nailsworth Office head right along Fountain Street (A46) then take the second right-hand turn signposted Horsley. Follow this road for approximately 0.45 mile (into Horsley village) where the property can be found opposite the car park on the right hand side.

What 3 Words: [///mailings.pounce.stormy](https://www.what3words.com/#!/mailings.pounce.stormy)

Services & Tenure

The tenure is Freehold.

Local Authority

Stroud District Council

Council Tax Band: C

Our reference

STRVAL/SM/RN/20062024

We'd love to hear from you

4 The Old George, Fountain Street, Nailsworth, Gloucestershire, GL6 0BL

T: 01453 836736

E: stroudvalleys@perrybishop.co.uk





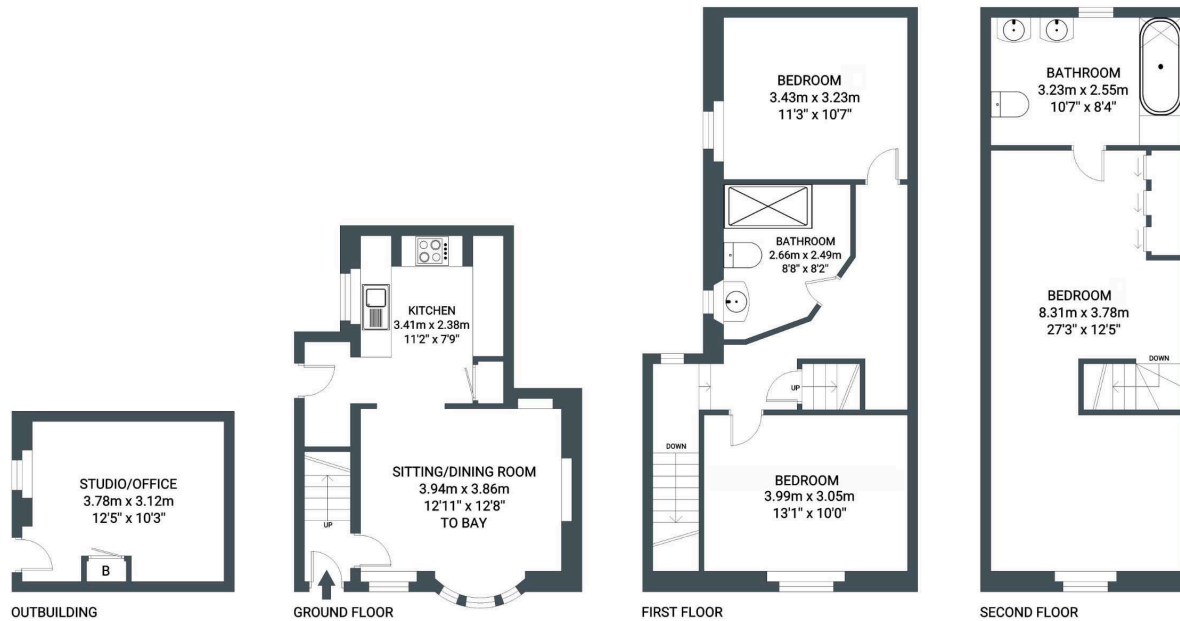




PerryBishop

PROPERTY MADE PERSONAL

APPROXIMATE AREA = 119 SQ M / 1286 SQ FT
OUTBUILDING = 12 SQ M / 134 SQ FT
TOTAL = 131 SQ M / 1420 SQ FT



4 The Old George, Fountain Street, Nailsworth, Gloucestershire, GL6 0BL

T: 01453 836736

E: stroudvalleys@perrybishop.co.uk

perrybishop.co.uk

ID Checks: Please advise that we charge an admin fee of £25.00 for each individual and £40.00 for a joint purchase when purchasing from us which is payable on a non-refundable basis at the start of the transaction.

Disclaimer: These particulars should not be relied upon as statement or representation of fact and do not constitute part of an offer or contract. The seller does not make or give, nor do we or our employees have the authority to make or give any representation or warranty in relation to this property. We would strongly recommend that all the information we provide about the property is verified by yourself on inspection. We have not carried out a survey nor have we tested any appliances, services or specific fittings at the property. We work with a number of partner companies that pay an average referral fee of £100.00. For specific information please contact your local branch.

