

PerryBishop

PROPERTY MADE PERSONAL



Blenheim House, Townsend, Randwick, Stroud, Gloucestershire, GL6 6ER

Blenheim House,

Townsend, Randwick, Stroud, Gloucestershire, GL6 6ER

Key Features



4
Bedrooms



2
Bathrooms



1
Reception

- Sought after location
- Far reaching views
- Parking
- Beautifully presented
- Character features
- EPC: C

About the property

Situated in an elevated position stands this beautifully presented character residence offering flexible living accommodation along with plenty of parking and far-reaching views.

On entering through a pitched roof porch there is a spacious entrance hall which boasts a feature inglenook fireplace with a wood burner. Leading off is a well-presented cloakroom with built-in storage.

The open plan kitchen/dining room/sitting room is immaculately presented, again benefitting from a feature fireplace, with doors leading out to a raised decked area which is an ideal place to sit, relax and enjoy the views. The kitchen has recently been updated in a contemporary style and enjoys plenty of built-in units with a central island.

Leading off there is a good size utility benefitting from direct access out to the garden.

To the first floor, there are two beautifully presented bedrooms both enjoying far-reaching views and one of which enjoys its own dressing room.

The spacious family bathroom is presented in a contemporary style and benefits from a separate shower.

On the second floor, there are a further two bedrooms enjoying a vaulted ceiling and far-reaching views and a further modern bathroom.

Outside, there is a gravelled driveway and parking. The gardens are beautifully maintained benefitting from a raised decked area which is an ideal place to relax and entertain.

Amenities

Randwick is a small traditional Cotswold village, originally made up of several Hamlets which have over the years grown to form the Village. Randwick shares many amenities with the surrounding villages and local town, but it does offer a very highly regarded Primary School, a public house and a village hall.

The main local villages are Cashes Green & Cainscross, offering a range of shops including a small supermarket, hair salon, fish & chip shop, several pubs, gymnasium & children's play centre, a rugby club and a garage.

Directions

From our offices in Nailsworth take the A46 towards Stroud. After 3 miles at Stroud auction rooms, turn left into Dudbridge Road and follow the signs towards Cainscross. At the Sainsbury's roundabout take the third exit onto Dudbridge Road. At the Cainscross roundabout



take the first exit onto Westward Road and then turn right into Cashes Green Road. Proceed along this road for just over a mile and after a short distance the property can be found on the left hand side.

Services & Tenure

The tenure is Freehold.

Local Authority

Stroud District Council

Council Tax Band: E

Our reference

STRVAL/SM/RN/09062023

We'd love to hear from you

4 The Old George, Fountain Street, Nailsworth,
Gloucestershire, GL6 0BL

T: 01453 836736

E: stroudvalleys@perrybishop.co.uk

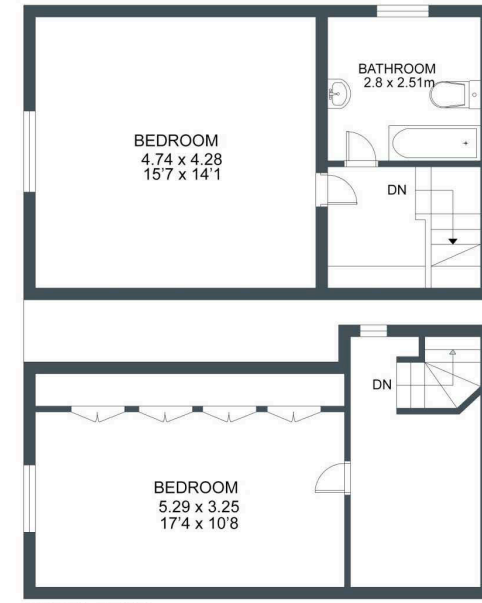
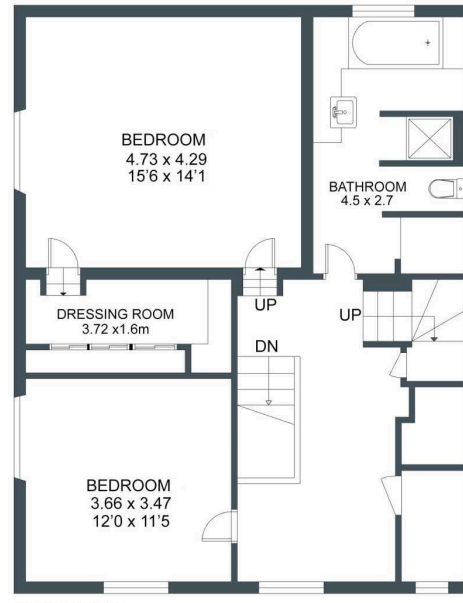








Approximate Area = 239.5 sq m / 2578 sq ft
Including Limited Use Area (19.6 sq m / 211 sq ft)





4 The Old George, Fountain Street, Nailsworth, Gloucestershire, GL6 0BL

T: 01453 836736

E: stroudvalleys@perrybishop.co.uk

[perrybishop.co.uk](https://www.perrybishop.co.uk)

Disclaimer: These particulars should not be relied upon as statement or representation of fact and do not constitute part of an offer or contract. The seller does not make or give, nor do we or our employees have the authority to make or give any representation or warranty in relation to this property. We would strongly recommend that all the information we provide about the property is verified by yourself on inspection. We have not carried out a survey nor have we tested any appliances, services or specific fittings at the property. We work with a number of partner companies that pay an average referral fee of £100.00. For specific information please contact your local branch.

Gloucestershire • Oxfordshire • Wiltshire

