

# PerryBishop

PROPERTY MADE PERSONAL

Highwood Drive, Nailsworth, Stroud, Gloucestershire, GL6 0BJ



Sought after location • Close to amenities • Walking distance to school • Parking • Garage • Patio garden • Well presented • EPC C



# Highwood Drive,

Nailsworth, Stroud, Gloucestershire, GL6 0BJ

## Key Features



2  
Bedrooms



1  
Bathroom



1  
Reception

## About the property

Introducing a stylish and contemporary terraced house nestled in the heart of a charming town. This property boasts two spacious bedrooms, offering comfortable living spaces for individuals or small families.

The house showcases a range of desirable features, including a delightful patio area perfect for enjoying al fresco dining or simply unwinding after a long day. With off-street parking and a garage, convenience and security are seamlessly integrated into everyday living. The interior of the house is thoughtfully designed, with a harmonious balance of modernity and functionality. The well-appointed kitchen provides space for culinary exploration, while the living area boasts a welcoming atmosphere for relaxation and entertainment.

Located in close proximity to local amenities and transport links, this property presents an opportunity to embrace a vibrant lifestyle in a sought-after town. Don't miss the chance

to make this house your new home.

Please note; The garage/parking is situated a short distance away and is Leasehold.

## Amenities

The market town of Nailsworth is rapidly becoming the most popular and avant-garde district with coffee shops, cafés and restaurants. Alongside these well regarded eateries are the mouth-watering Williams Fish Market & Food Hall and renowned Hobbs House Bakery, plus a wonderfully diverse selection of fashionable boutiques and shops, salons, antiques & furniture shops and galleries for local crafts-people. Nailsworth has an annual arts festival. The town also offers a post office, butchers, grocery shops, doctors, dentists and a public library.

## Directions

From our Nailsworth Office, at the roundabout take the first exit onto Spring Hill, follow this road for about 1 mile (the road becomes Nymphsfield Rd. about halfway up). At the first roundabout go straight over then take the first left into Highwood Drive, the property is a short distance along on the right hand side.

## Services & Tenure

The tenure is Freehold. The garage is Leasehold, 999 years from 1 January 2005.

## Local Authority

Stroud District Council

Council Tax Band: B

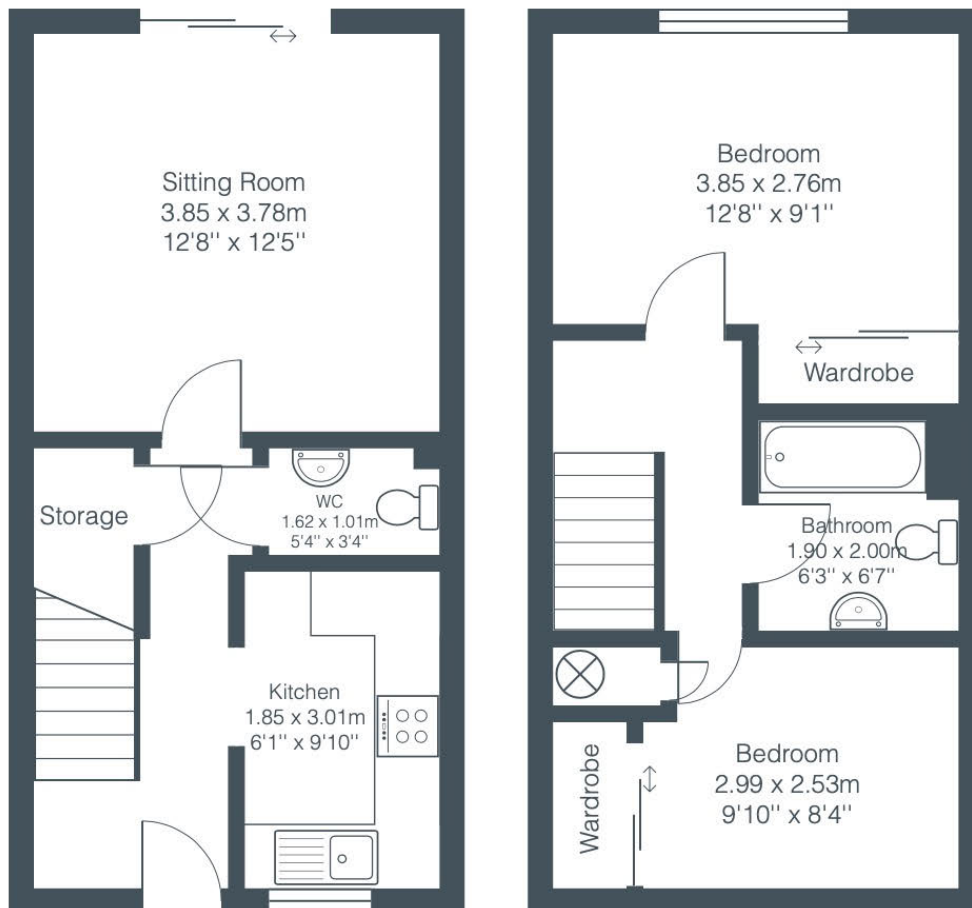




**Our reference**  
STRVAL/SM/RN/05022024

**We'd love to hear from you**  
4 The Old George, Fountain Street, Nailsworth, Gloucestershire,  
GL6 0BL  
T: 01453 836736  
E: [stroudvalleys@perrybishop.co.uk](mailto:stroudvalleys@perrybishop.co.uk)





Total Area: 62.5 m<sup>2</sup> ... 673 ft<sup>2</sup>

All measurements are approximate and for display purposes only.

**PerryBishop**

PROPERTY MADE PERSONAL

4 The Old George, Fountain Street, Nailsworth, Gloucestershire, GL6 0BL

T: 01453 836736

E: [stroudvalleys@perrybishop.co.uk](mailto:stroudvalleys@perrybishop.co.uk)

[perrybishop.co.uk](http://perrybishop.co.uk)

**ID Checks:** Please advise that we charge an admin fee of £25.00 for each individual and £40.00 for a joint purchase when purchasing from us which is payable on a non-refundable basis at the start of the transaction.

**Disclaimer:** These particulars should not be relied upon as statement or representation of fact and do not constitute part of an offer or contract. The seller does not make or give, nor do we or our employees have the authority to make or give any representation or warranty in relation to this property. We would strongly recommend that all the information we provide about the property is verified by yourself on inspection. We have not carried out a survey nor have we tested any appliances, services or specific fittings at the property. We work with a number of partner companies that pay an average referral fee of £100.00. For specific information please contact your local branch.

Gloucestershire • Oxfordshire • Wiltshire

