

Glyn Terrace, Middle Road, Thrupp, Stroud, Gloucestershire, GL5 2DN



Sought after location • Parking • Close to amenities • Countryside views • Terraced garden • EPC
TBC

Glyn Terrace,

Middle Road, Thrupp, Stroud, Gloucestershire, GL5 2DN

Key Features



3

Bedrooms



1

Bathroom



1

Reception

About the property

Nestled in a picturesque setting, this charming and homely end of terrace house offers a delightful living experience. Boasting three bedrooms, this property is perfect for families or professionals seeking a comfortable and peaceful abode.

The house is thoughtfully designed, with a terraced garden and a patio area perfect for outdoor relaxation and entertaining. The property also benefits from off-street parking, providing convenience and ease for residents.

Located in a scenic area, this house offers a tranquil retreat from the hustle and bustle of city life while still being within easy reach of local amenities.

Don't miss out on the opportunity to make this lovely property your new home. Book a viewing today and experience the warmth and charm of this delightful end of terrace house.

Amenities

The meeting point of five valleys, the historic town of Stroud is a well-known centre for arts and crafts as well as its weekly Farmers Market; recently voted the best in the country. An annual textile festival is held in the town as well as various exhibitions at the Subscription Rooms and at The Museum in the Park.

Stroud has two state Grammar Schools, for boys and girls, and Archway School, a mixed Comprehensive Secondary School. Nearby are several Independent Schools such as Beadesert Park School in Minchinhampton, Wycliffe College in Stonehouse and the prestigious Cheltenham College and Cheltenham Ladies College are approximately 30 minutes away. Stroud has good transport links with London Paddington only 90 minutes (approx.) by train and Bath and Bristol 45 minutes by car.

Broadband and Mobile Coverage

For an indication of specific broadband and mobile speed and supply or coverage in the area we recommend the Broadband and mobile coverage checker - Ofcom.

Directions

From the agents office proceed out of town on the London road. Follow this road towards Thrupp, you will pass an industrial park on the right and shortly after you will see a gathering of terraced houses elevated on the left and a lane directly after called Brewery lane. Turn into the lane and take the first turning on the left, Spring lane, which leads to Middle Road. You will see the property halfway along on the right hand side.

What 3 Words: [///tissue.essays.udder](https://tissue.essays.udder)

Services & Tenure

The tenure is Freehold.

Local Authority

Stroud District Council

Council Tax Band: B

Our reference

STRVAL/SM/RN/25092024

We'd love to hear from you

4 The Old George, Fountain Street, Nailsworth, Gloucestershire, GL6 0BL

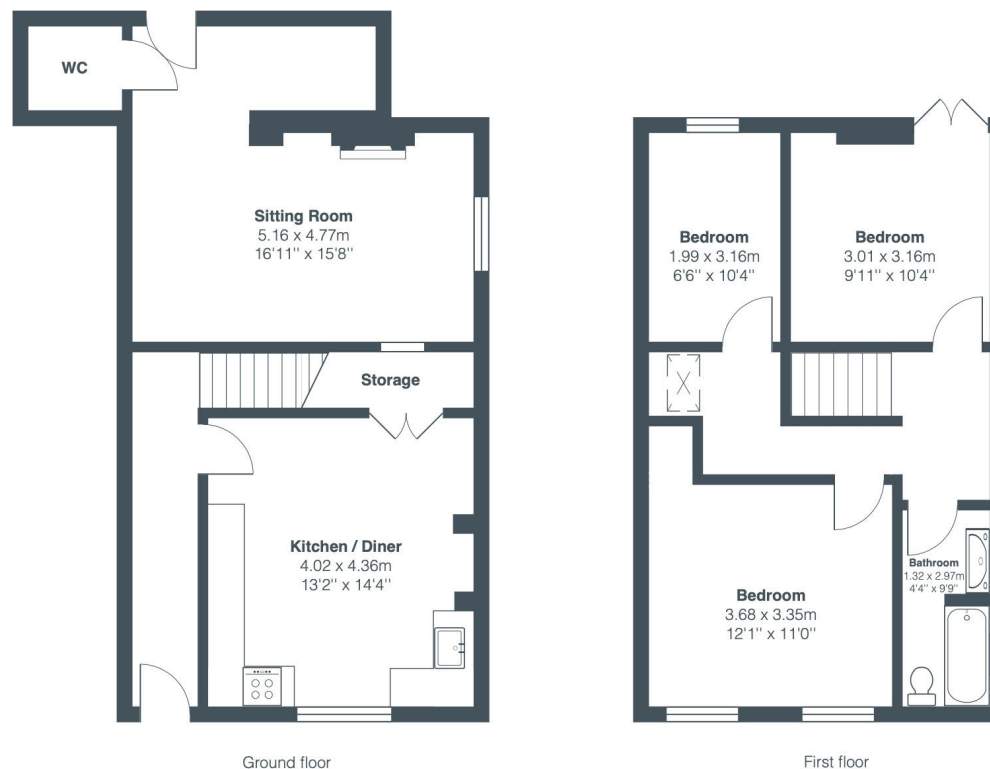
T: 01453 836736

E: stroudvalleys@perrybishop.co.uk









Total Area: 96.8 m² ... 1042 ft²

All measurements are approximate and for display purposes only

PerryBishop
PROPERTY MADE PERSONAL

4 The Old George, Fountain Street, Nailsworth, Gloucestershire, GL6 0BL

T: 01453 836736

E: stroudvalleys@perrybishop.co.uk

perrybishop.co.uk

ID Checks: Please advise that we charge an admin fee of £25.00 for each individual and £40.00 for a joint purchase when purchasing from us which is payable on a non-refundable basis at the start of the transaction.

Disclaimer: These particulars should not be relied upon as statement or representation of fact and do not constitute part of an offer or contract. The seller does not make or give, nor do we or our employees have the authority to make or give any representation or warranty in relation to this property. We would strongly recommend that all the information we provide about the property is verified by yourself on inspection. We have not carried out a survey nor have we tested any appliances, services or specific fittings at the property. We work with a number of partner companies that pay an average referral fee of £100.00. For specific information please contact your local branch.

Gloucestershire • Oxfordshire • Wiltshire

