

PerryBishop

PROPERTY MADE PERSONAL

Guildings Way, Kings Stanley, Stonehouse, Gloucestershire, GL10 3LF



Sought after location • Walking distance to amenities • Close to primary schools • Countryside views • EPC D



Guildings Way,

Kings Stanley, Stonehouse, Gloucestershire, GL10 3LF

Key Features



3
Bedrooms



1
Bathroom



2
Receptions

About the property

Situated in the heart of the popular area of Kings Stanley stands this family home offering the perfect blend of convenience and comfort.

Boasting three bedrooms, a family bathroom, and a conservatory. This property is ideal for a growing family. The house is bright and charming. The conservatory leads out to the rear garden and enjoys views out to open countryside. It has a homely feel that welcomes you as soon as you step inside.

Outside, the property features a garden to the front, and a private rear garden with a patio area, providing the perfect spot for outdoor relaxation or entertaining guests taking in the views across the open fields. With off-street parking and a garage.

This peaceful property is the perfect place to call home,

offering a tranquil retreat in a vibrant town setting.

Don't miss out on the opportunity to make this house yours.

Amenities

Kings Stanley offers many amenities including a grocery shop, village primary school and a pub. Further afield are the towns of Stonehouse and Stroud, both offering a comprehensive range of shops, banks and leisure facilities.

The nearest secondary schools are Maidenhill mixed comprehensive, the Downfield Grammar Schools and comprehensive Archway School in Stroud. For independent education, Wycliffe College in Stonehouse caters for students aged 2 to 18 and offers nursery, preparatory and senior schools as well as a sixth form college.

Kings Stanley offers excellent transport links being close to the M5 and to Stonehouse and Cam & Dursley stations for direct trains to Gloucester, Bristol and London Paddington.

Directions

From our office in Nailsworth take the A46 towards Stroud bearing left towards M5, Stonehouse and Dudbridge. Turn left at the roundabout and follow the signs for the A419. Continue along the A419 until you reach the traffic lights and turn left onto Cotswold Way continuing onto Ryeford Road then turn left into St Georges Avenue which turns into Church Street continue along and take the left turning into Elmlea Road follow the road around to the left which then turns into Guildings Way where the property can be found on the right hand side.





Services & Tenure

The tenure is Freehold.

Local Authority

Stroud District Council

Council Tax Band: C

Our reference

STRVAL/SM/RN/08042024

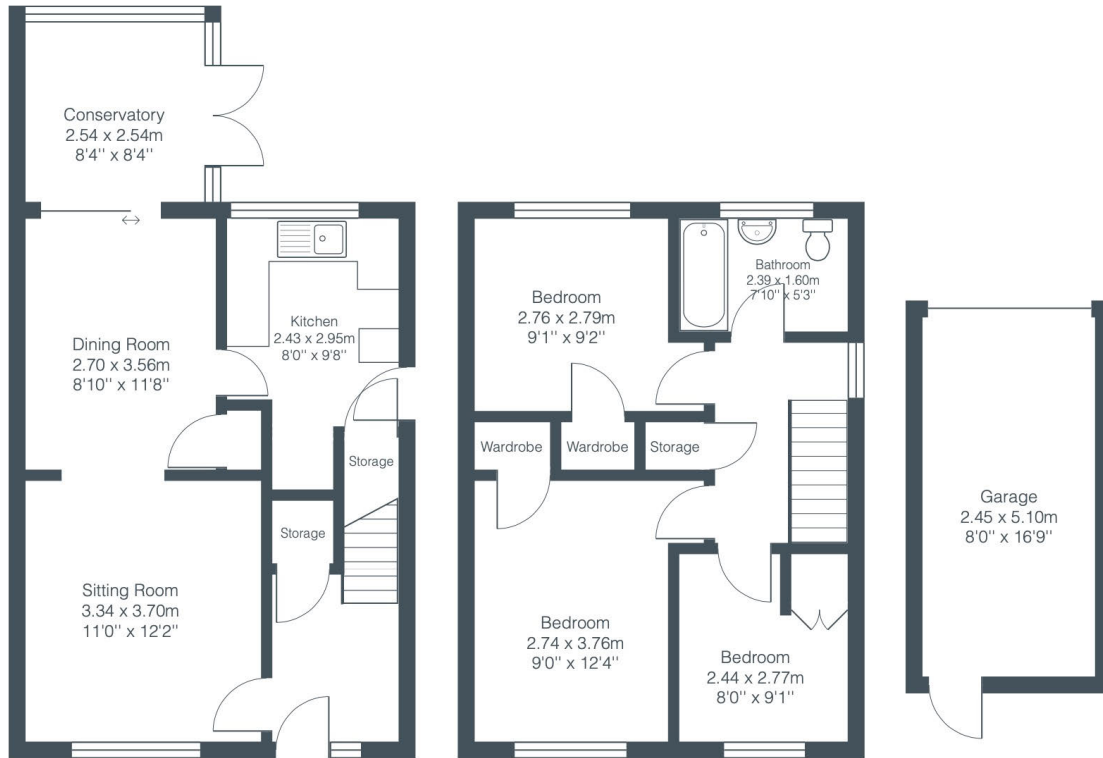
We'd love to hear from you

4 The Old George, Fountain Street, Nailsworth, Gloucestershire,
GL6 0BL

T: 01453 836736

E: stroudvalleys@perrybishop.co.uk





Total Area: 98.1 m² ... 1056 ft²

All measurements are approximate and for display purposes only.

PerryBishop

PROPERTY MADE PERSONAL

4 The Old George, Fountain Street, Nailsworth, Gloucestershire, GL6 0BL

T: 01453 836736

E: stroudvalleys@perrybishop.co.uk

perrybishop.co.uk

ID Checks: Please advise that we charge an admin fee of £25.00 for each individual and £40.00 for a joint purchase when purchasing from us which is payable on a non-refundable basis at the start of the transaction.
Disclaimer: These particulars should not be relied upon as statement or representation of fact and do not constitute part of an offer or contract. The seller does not make or give, nor do we or our employees have the authority to make or give any representation or warranty in relation to this property. We would strongly recommend that all the information we provide about the property is verified by yourself on inspection. We have not carried out a survey nor have we tested any appliances, services or specific fittings at the property. We work with a number of partner companies that pay an average referral fee of £100.00. For specific information please contact your local branch.

Gloucestershire • Oxfordshire • Wiltshire

