

Braemar, 1 Glebe Road, Minchinhampton, Stroud, Gloucestershire, GL6 9JY



Sought after location • Walking distance to amenities • Chain free • Nice size garden • Well presented • Parking garage • EPC D

Braemar,

1 Glebe Road, Minchinhampton, Stroud, Gloucestershire, GL6 9JY

Key Features



3
Bedrooms



1
Bathroom



2
Receptions

About the property

On the market for the first time and nestled in a sought-after residential area, this three bedroom detached bungalow offers a comfortable and homely living space.

Boasting three bedrooms, this property is perfect for families or those seeking a peaceful retreat.

The property is accessible with off-street parking and a garage, providing convenience for residents. The garden offers a tranquil outdoor space, ideal for relaxation or entertaining guests. The interior of the property provides a warm and inviting atmosphere throughout. With its convenient location and charming features, this bungalow presents a wonderful opportunity for those looking for a new place to call home and to put their own stamp on.

Don't miss out on the chance to make this property your own. Contact us today to arrange a viewing.

Amenities

The small Cotswold town of Minchinhampton is located on the edge of Minchinhampton Common, 600 acres of National Trust land providing a wonderful unspoilt area for walking, horse riding and playing golf. The town has a range of shops satisfying everyday requirements for vegetables, meat and everyday groceries; as well as coffee shops, weekly market, chemist, doctors surgery and primary school.

More comprehensive shopping can be found approximately 4 miles away in Stroud which enjoys a weekly farmers market, thriving café culture and regular arts based festivals. There are also 3 supermarkets including Waitrose. The nearby popular town of Nailsworth also provides a variety of shops including the well-known delicatessen Williams's Kitchen and Hobbs House Bakery.

Stroud has a mainline train station running a direct service to London Paddington in just over 90 minutes. Junction 13 of the M5 is approximately 7 miles away at Stonehouse.

Directions

From our office in Nailsworth take the third exit at the mini roundabout and continue past Morrisons and up 'The Ladder' (also known as "The W"). From the top of 'The Ladder' proceed across the common to the T junction at Tom Long's post. Turn right at the T junction and then take the second turning on the right into Butt Street and take the next left into Summerfield road then turn right into Glebe road where the property can be found on the right hand side.

Services & Tenure

The tenure is Freehold.

Local Authority

Stroud District Council

Council Tax Band: D

Our reference

STRVAL/SM/RN/16052024

We'd love to hear from you

4 The Old George, Fountain Street, Nailsworth, Gloucestershire, GL6 OBL

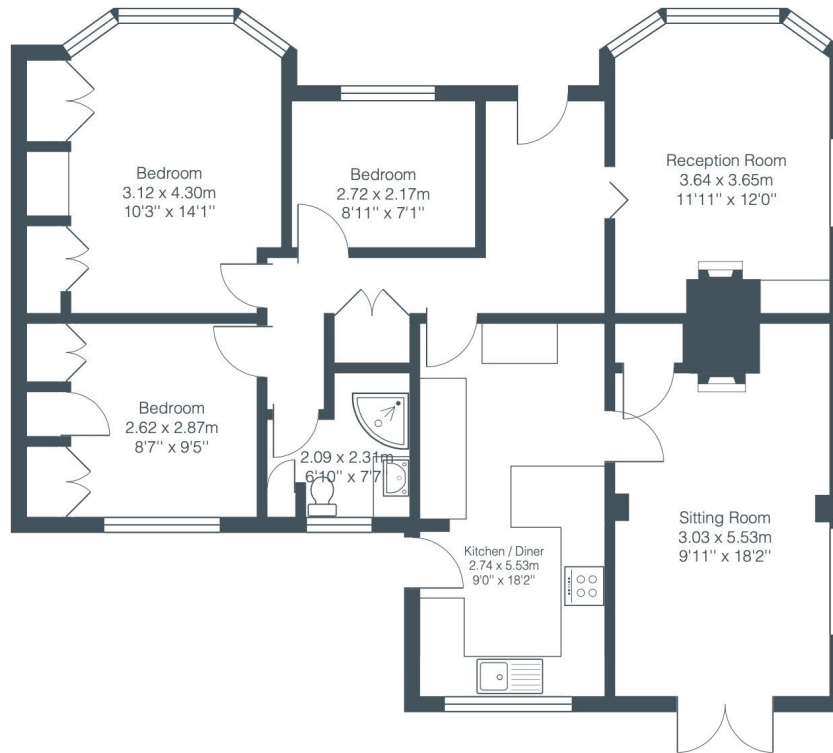
T: 01453 836736

E: stroudvalleys@perrybishop.co.uk









Total Area: 96.8 m² ... 1041 ft²

All measurements are approximate and for display purposes only.

PerryBishop

PROPERTY MADE PERSONAL

4 The Old George, Fountain Street, Nailsworth, Gloucestershire, GL6 0BL

T: 01453 836736

E: stroudvalleys@perrybishop.co.uk

perrybishop.co.uk

ID Checks: Please advise that we charge an admin fee of £25.00 for each individual and £40.00 for a joint purchase when purchasing from us which is payable on a non-refundable basis at the start of the transaction.

Disclaimer: These particulars should not be relied upon as statement or representation of fact and do not constitute part of an offer or contract. The seller does not make or give, nor do we or our employees have the authority to make or give any representation or warranty in relation to this property. We would strongly recommend that all the information we provide about the property is verified by yourself on inspection. We have not carried out a survey nor have we tested any appliances, services or specific fittings at the property. We work with a number of partner companies that pay an average referral fee of £100.00. For specific information please contact your local branch.

Gloucestershire • Oxfordshire • Wiltshire

