

Silver Street, Tetbury, Gloucestershire, GL8 8DH



Town house • Two bedrooms • Stylish kitchen with wood burning stove • Dining room with bi-folding doors onto the courtyard • Sitting room with original elm floor • Stylishly refurbished and decorated • Centre of town location • Wealth of character creating a lifestyle property • EPC Grade II Listed

Silver Street,

Tetbury, Gloucestershire, GL8 8DH

Key Features



2
Bedrooms



1
Bathroom



2
Receptions

About the property

Quirky and for someone looking for that lifestyle property, this contemporary on the inside but traditional on the outside Grade II listed town house has been refurbished and redesigned to create a stylish home whilst retaining the character and magnificence of this period house.

Approached from the street into the bespoke kitchen with a range of units, open plan shelving and integrated appliances to include dishwasher, washing machine, oven and gas hob, bespoke etched copper back splashes, an island unit with a wooden top provides ample working space and a place to sit. Oak beams, painted floors and a wood burning stove create an ambiance for the chef amongst us. Stairs rise to the dining room where full width folding doors open out onto a small courtyard which has been completely clad in Canadian redwood cedar. The delightful sitting room on the floor above has fully restored wide elm floorboards, complimented by Artimede designed wall lights and discreet downlighting, all on dimmer switches.

Behind a secret door can be found the second bedroom or snug, a later extension to the house it still retains the original exterior wall stone mullions adding more character to this cosy room. Rising to the next floor the ceiling becomes vaulted providing an airy and light feel to the upper floor, here there is a master bedroom and a vaulted bathroom with a walk in double shower and underfloor heating, a large Velux window floods the room with light matched by a similar window on the landing.

Whilst this charming town house has a wealth of character features, a gas fired combi boiler feeding contemporary designer radiators enhances this beautiful and sophisticated house, painted throughout in Farrow and Ball colours and within striking distance of the coffee shops and restaurants of Tetbury.

A perfect lock up and leave, weekend retreat or potential for a holiday let, this town house is definitely for the discerning.

Amenities

Tetbury, often referred to as the gateway to the Cotswolds, and once voted by Country Life magazine as the third most desirable town in the country, is a thriving historic Cotswold market town situated less than half an hour from both the M4 and M5 motorways and within easy reach of Cirencester, Cheltenham, Bath, Bristol and Swindon. There is good access to Kemble Railway Station with regular Intercity services to London and other regional commercial centres. Tetbury is well known for its royal houses, The Duchy of Cornwall owns Highgrove House, a home and garden beautifully transformed by His Majesty King Charles III and Gatcombe Park the home of The Princess Royal both of which are close by. Tetbury boasts an exciting range of shops including specialist boutiques, city standard delicatessens, the Highgrove Shop, two supermarkets and many fine antique shops. The town has an excellent variety of hotels, restaurants, cafes and brasseries offering a mouth-watering range of cuisine.

There is an excellent range of schools in the area including Westonbirt Preparatory and Senior Schools (3 - 18 years). There is also Beaudesert Park at Minchinhampton together with popular state primary and secondary schools in and around Tetbury.

A visit to the Tourist Information Office will provide you with a map of the area showing some of our local attractions including the world famous Westonbirt Arboretum, or the nearby Cotswold Water Park or perhaps the Abbey and Abbey House Gardens in Malmesbury.

Directions

From our office in Church Street proceed to the mini roundabout and take the third exit. Follow the road round and after the bend the property can be found on the right hand side.

Services & Tenure

The tenure is Freehold.

Local Authority

Cotswold District Council

Council Tax Band: D

Our reference

TET/JR/RN/15122022

We'd love to hear from you

3 Church Street, Tetbury, Gloucestershire, GL8 8JG

T: 01666 504418

E: tetbury@perrybishop.co.uk



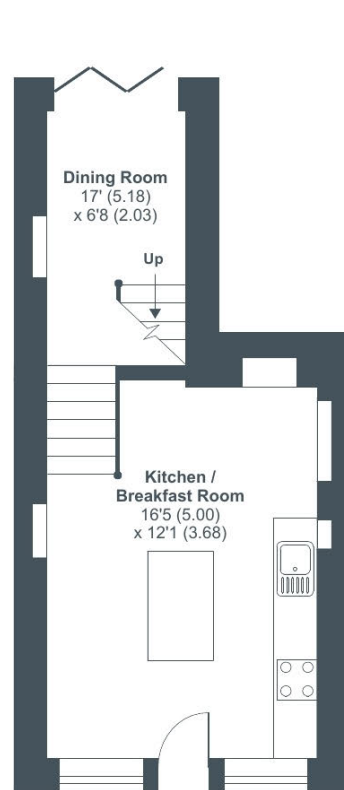




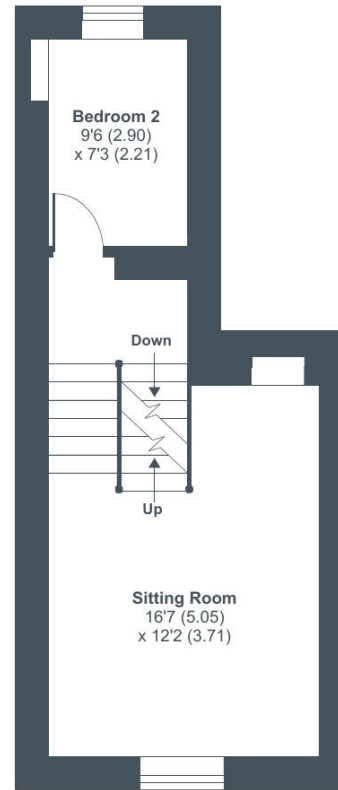
Silver Street, Tetbury, GL8

Approximate Area = 864 sq ft / 80.2 sq m

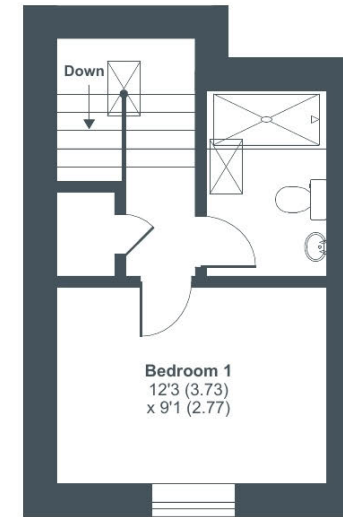
For identification only - Not to scale



GROUND FLOOR



FIRST FLOOR



SECOND FLOOR



Floor plan produced in accordance with RICS Property Measurement Standards incorporating International Property Measurement Standards (IPMS2 Residential). © nichecom 2022. Produced for Perry Bishop & Chambers. REF: 503059



3 Church Street, Tetbury, Gloucestershire, GL8 8JG

T: 01666 504418

E: tetbury@perrybishop.co.uk

perrybishop.co.uk

Disclaimer: These particulars should not be relied upon as statement or representation of fact and do not constitute part of an offer or contract. The seller does not make or give, nor do we or our employees have the authority to make or give any representation or warranty in relation to this property. We would strongly recommend that all the information we provide about the property is verified by yourself on inspection. We have not carried out a survey nor have we tested any appliances, services or specific fittings at the property. We work with a number of partner companies that pay an average referral fee of £100.00. For specific information please contact your local branch.

Gloucestershire • Oxfordshire • Wiltshire

