

Flat 1, Baytree Court, The Chipping, Tetbury, GL8 8EU



Period first floor apartment • Located at the top of the famous Chipping Steps • Impeccably presented throughout • Charm and supplecated living space • Exudes luxury and style • Spacious open plan sitting/dining room • Fitted kitchen/breakfast room • Two double bedrooms • EPC D

Flat 1, Baytree Court,

The Chipping, Tetbury, GL8 8EU

Key Features



2
Bedrooms



1
Bathroom



1
Reception

About the property

Impeccably presented period first floor apartment boasting a charming and sophisticated living space.

Located at the top of the famous Chipping Steps in the heart of the town centre.

This property exudes luxury and style, ideal for professionals seeking a refined urban retreat. With its combination of classic charm and contemporary convenience, this apartment offers a unique opportunity to experience the best of living in the heart of this famous Market Town.

Baytree Court is a period building with only two apartments, both located on the first floor.

Enter into the hallway with access to the principal bedroom having built-in storage and sash window overlooking the front aspect, there is a second double bedroom and bathroom with modern white suite. At the far end of the apartment is the spacious open plan sitting/dining room with study area and triple sash windows. Recently fitted kitchen/breakfast room with integrated appliances.

There is on street parking available in nearby Chipping Street or parking at the adjoining Chipping car park.

Amenities

Tetbury, often referred to as the gateway to the Cotswolds, and once voted by Country Life magazine as the third most desirable town in the country, is a thriving historic Cotswold market town situated less than half an hour from both the M4 and M5 motorways and within easy reach of Cirencester, Cheltenham, Bath, Bristol and Swindon. There is good access to Kemble Railway Station with regular Intercity services to London and other regional commercial centres.

Tetbury is well known for its royal houses, The Duchy of Cornwall owns Highgrove House, a home and garden beautifully transformed by His Majesty King Charles III and Gatcombe Park the home

of The Princess Royal both of which are close by. Tetbury boasts an exciting range of shops including specialist boutiques, city standard delicatessens, the Highgrove Shop, two supermarkets and many fine antique shops. The town has an excellent variety of hotels, restaurants, cafes and brasseries offering a mouth-watering range of cuisine.

There is an excellent range of schools in the area including Westonbirt Preparatory and Senior Schools (3 – 18 years). There is also Beaudesert Park at Minchinhampton together with popular state primary and secondary schools in and around Tetbury.

A visit to the Tourist Information Office will provide you with a map of the area showing some of our local attractions including the world famous Westonbirt Arboretum, or the nearby Cotswold Water Park or perhaps the Abbey and Abbey House Gardens in Malmesbury.

Broadband and Mobile Coverage

For an indication of specific broadband and mobile speed and supply or coverage in the area we recommend the Broadband and mobile coverage checker – Ofcom.

Directions

From our office in Church Street, straight over the mini roundabout into Chipping Street. Baytree Court is located off the Chipping Carpark above the Cafe/Deli/Wine Shop.

What3Words: ///wept.joyously.grocers

Services & Tenure

The tenure is Leasehold, 999 years from 31 March 2004.

Ground Rent: £60 per month.

All mains services are connected.

Local Authority

Cotswold District Council

Council Tax Band- B

Our reference

TET/JR/MS/08082024

We'd love to hear from you

3 Church Street, Tetbury, Gloucestershire, GL8 8JG

T: 01666 504418

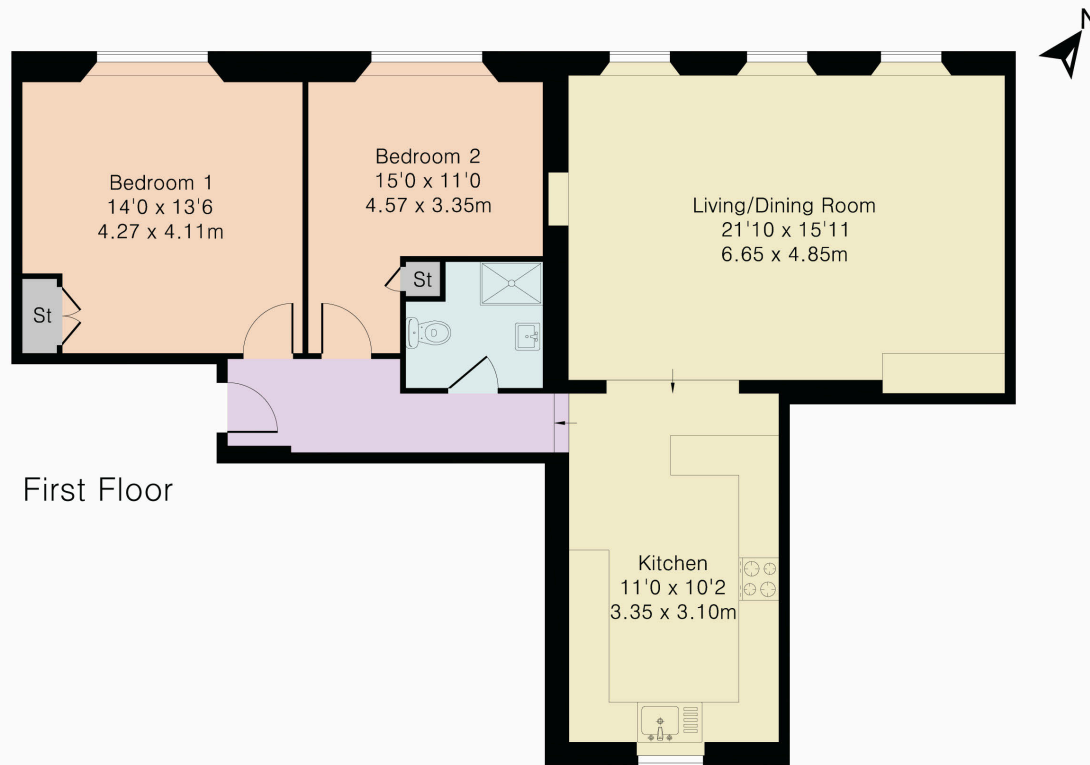
E: tetbury@perrybishop.co.uk







Approximate Gross Internal Area 1016 sq ft – 94 sq m



Although Pink Plan Ltd ensures the highest level of accuracy, measurements of doors, windows and rooms are approximate and no responsibility is taken for error, omission or misstatement. These plans are for representation purposes only as defined by RICS code of measuring practise. No guarantee is given on total square footage of the property within this plan. The figure icon is for initial guidance only and should not be relied on as a basis of valuation.



PerryBishop

PROPERTY MADE PERSONAL

3 Church Street, Tetbury, Gloucestershire, GL8 8JG

T: 01666 504418

E: tetbury@perrybishop.co.uk

perrybishop.co.uk

ID Checks: Please advise that we charge an admin fee of £25.00 for each individual and £40.00 for a joint purchase when purchasing from us which is payable on a non-refundable basis at the start of the transaction.

Disclaimer: These particulars should not be relied upon as statement or representation of fact and do not constitute part of an offer or contract. The seller does not make or give, nor do we or our employees have the authority to make or give any representation or warranty in relation to this property. We would strongly recommend that all the information we provide about the property is verified by yourself on inspection. We have not carried out a survey nor have we tested any appliances, services or specific fittings at the property. We work with a number of partner companies that pay an average referral fee of £100.00. For specific information please contact your local branch.

Gloucestershire • Oxfordshire • Wiltshire

