

West Street Tetbury, Gloucestershire, GL8 8DR



Charming period Cotswold stone cottage with stylish features • Picturesque town setting with views over Cutwell • Cosy layout over three floors • Sitting/dining room & lounge/sitting room • Top floor double bedroom with free standing roll top bath • Enclosed rear garden with a view • No onward chain • EPC F

West Street

Tetbury, Gloucestershire, GL8 8DR

Key Features



2
Bedrooms



2
Bathrooms



2
Receptions

About the property

Charming period Cotswold stone cottage located in a picturesque town setting of Tetbury with views over the Cutwell Valley.

This bright and sophisticated property boasts a stylish interior with a convenient layout. The cosy sitting/dining room offers a welcoming atmosphere, perfect for relaxing or entertaining guests. The well-equipped kitchen leads out to a lovely lounge overlooking the garden and beyond.

The top floor double bedroom is elegantly designed with free standing roll top bath and separate cloakroom, offering a comfortable retreat for rest and relaxation. There is a second double bedroom and separate shower room on the middle floor.

There is a south facing courtyard garden located to the rear of the property with space for a table and chairs/sun loungers as well as a hot tub (water & electricity in place)

The property's scenic surroundings add to its appeal, providing a peaceful and idyllic setting to call home. With its convenient location and stylish features, this charming terraced cottage offers a unique opportunity for a sophisticated lifestyle just off the town centre.

Amenities

Tetbury, often referred to as the gateway to the Cotswolds, and once voted by Country Life magazine as the third most desirable town in the country, is a thriving historic Cotswold market town situated less than half an hour from both the M4 and M5 motorways and within easy reach of Cirencester, Cheltenham, Bath, Bristol and Swindon. There is good access to Kemble Railway Station with regular Intercity services to London and other regional commercial centres.

Tetbury is well known for its royal houses, The Duchy of Cornwall owns Highgrove House, a home and garden beautifully transformed by His Majesty King Charles III and Gatcombe Park the home of The Princess Royal both of which are close by. Tetbury boasts an exciting range of shops including specialist boutiques, city standard delicatessens, the Highgrove Shop, two supermarkets and many fine antique shops. The town has an excellent variety of hotels, restaurants, cafes and brasseries offering a mouth-watering range of cuisine.

There is an excellent range of schools in the area including Westonbirt Preparatory and Senior Schools (3 – 18 years). There is also Beaudesert Park at Minchinhampton together with popular state primary and secondary schools in and around Tetbury.

A visit to the Tourist Information Office will provide you with a map of the area showing some of our local attractions including the world famous Westonbirt Arboretum, or the nearby Cotswold Water Park or perhaps the Abbey and Abbey House Gardens in Malmesbury.

Directions

From our office in Church Street, walk down the hill towards the Church, take the second turning on the right hand side into West Street, Saddlers Cottage will be found on the left hand side.

What3Words: mistaking.heightens.dean

Services & Tenure

The tenure is Freehold. Mains drains, electricity and water are all connected. This property is not currently connected to mains gas.

Local Authority

Cotswold District Council

Our reference

TET/JR/00/14042025

We'd love to hear from you

3 Church Street, Tetbury, Gloucestershire, GL8 8JG

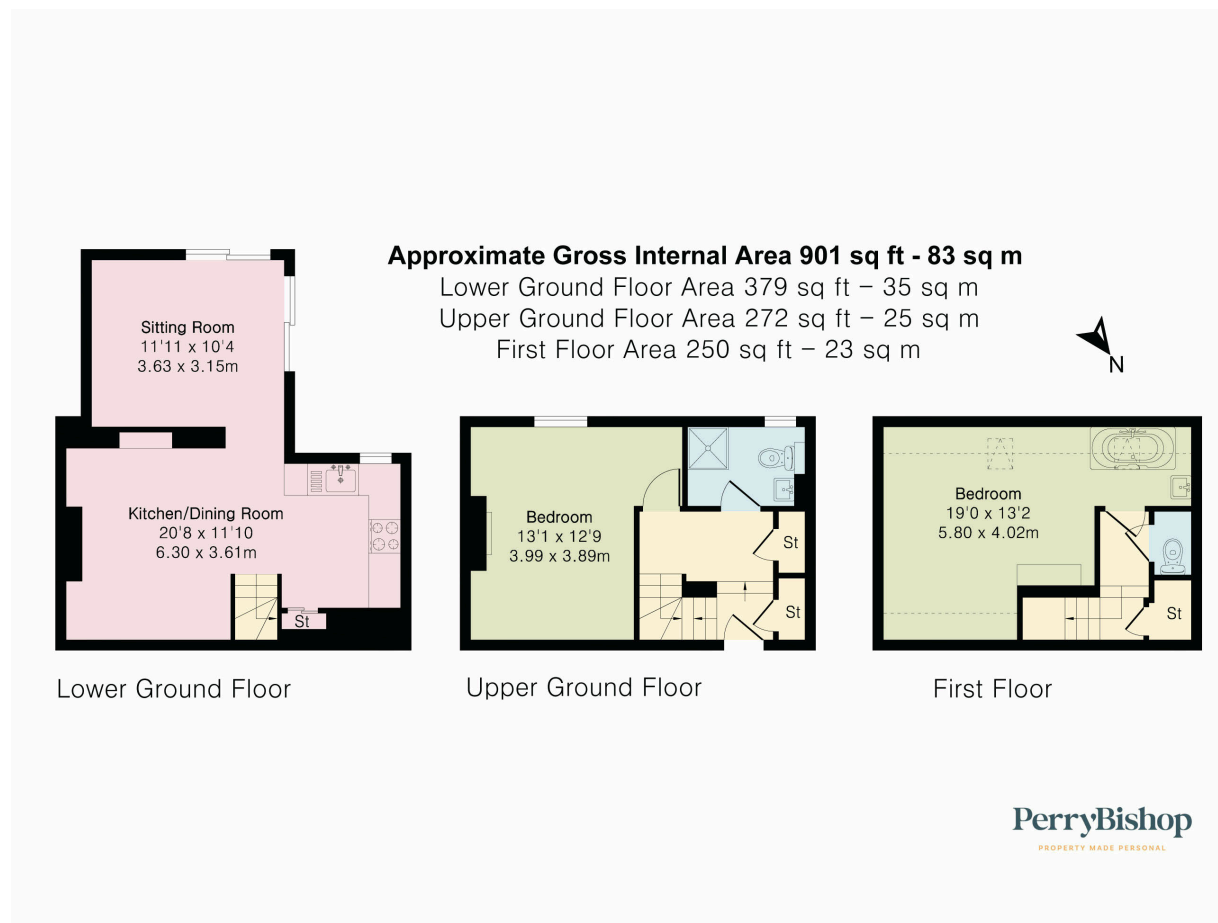
T: 01666 504418

E: tetbury@perrybishop.co.uk









Although Pink Plan Ltd ensures the highest level of accuracy, measurements of doors, windows and rooms are approximate and no responsibility is taken for error, omission or misstatement. These plans are for representation purposes only as defined by RICS code of measuring practise. No guarantee is given on total square footage of the property within this plan. The figure icon is for initial guidance only and should not be relied on as a basis of valuation.



3 Church Street, Tetbury, Gloucestershire, GL8 8JG

T: 01666 504418

E: tetbury@perrybishop.co.uk

perrybishop.co.uk

ID Checks: Please advise that we charge an admin fee of £25.00 for each individual and £40.00 for a joint purchase when purchasing from us which is payable on a non-refundable basis at the start of the transaction.

Disclaimer: These particulars should not be relied upon as statement or representation of fact and do not constitute part of an offer or contract. The seller does not make or give, nor do we or our employees have the authority to make or give any representation or warranty in relation to this property. We would strongly recommend that all the information we provide about the property is verified by yourself on inspection. We have not carried out a survey nor have we tested any appliances, services or specific fittings at the property. We work with a number of partner companies that pay an average referral fee of £100.00. For specific information please contact your local branch.

Gloucestershire • Oxfordshire • Wiltshire

