

Cornwall Close, Tetbury, Gloucestershire, GL8 8JD



- Penthouse apartment
- Boasting spacious accommodation
- Flooded with natural light creating a bright and airy atmosphere
- Open plan fitted kitchen/dining/living space
- Double bedroom with built-in wardrobes
- EPC C

Cornwall Close

Tetbury

Key Features



1
Bedrooms



1
Bathrooms



1
Receptions

About the property

Step into this stunning modern penthouse apartment, offering a perfect blend of style and comfort.

This charming property boasts one spacious bedroom, ideal for a professional individual or couple seeking a sophisticated urban retreat.

The apartment is flooded with natural light, creating a bright and airy atmosphere throughout. The contemporary design features sleek finishes, providing a modern and inviting space to call home.

Entrance takes you into the open plan fitted kitchen/dining/living space. From the sitting room you have views towards Beaverton. Spacious double bedroom with dual aspect and built in wardrobes. Sizeable bathroom with separate shower cubicle.

The property benefits further from allocated parking located to the rear of the property. This well-maintained property is conveniently located close to amenities, restaurants, and transport links, making it the perfect choice for those seeking a stylish and convenient lifestyle.

Amenities

Tetbury, often referred to as the gateway to the Cotswolds, and once voted by Country Life magazine as the third most desirable town in the country, is a thriving historic Cotswold market town situated less than half an hour from both the M4 and M5 motorways and within easy reach of Cirencester, Cheltenham, Bath, Bristol and Swindon. There is good access to Kemble Railway Station with regular Intercity services to London and other regional commercial centres.

Tetbury is well known for its royal houses, The Duchy of Cornwall owns Highgrove House, a home and garden beautifully transformed by His Majesty King Charles III and Gatcombe Park the home of The Princess Royal both of which are close by. Tetbury boasts an exciting range of shops including specialist boutiques, city standard delicatessens, the Highgrove Shop, two supermarkets and many fine antique shops. The town has an excellent variety of hotels, restaurants, cafes and brasseries offering a mouth-watering range of cuisine.

There is an excellent range of schools in the area including Westonbirt Preparatory and Senior Schools (3 – 18 years). There is also Beaudesert Park at Minchinhampton together with popular state primary and secondary schools in and around Tetbury.

A visit to the Tourist Information Office will provide you with a map of the area showing some of our local attractions including the world famous Westonbirt Arboretum, or the nearby Cotswold Water Park or perhaps the Abbey and Abbey House Gardens in Malmesbury.

Additional Information

Additional information that may affect your decision to purchase this property is on our website under the property listing or on request from the office.

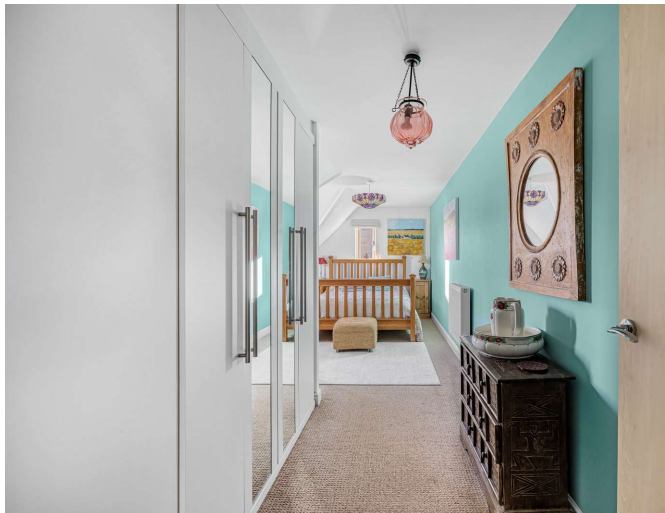
This includes: Broadband speed and mobile phone signal, flood risk, and area information. We also ask our clients about known legal aspects such as rights of way, restrictions, and accessibility information.

Directions

From our office in the centre of town proceed down Long Street. At the junction with London Road fork left into Hampton Street and left into Cornwall Close entrance. There is a lay-by shortly after this for the convenience store and it is best to park, the apartment is opposite.

What3Words: /// camps.alongside.cuddling





Local Authority

Cotswold District Council
Council tax Band – A

Services & Tenure

Tenure - Share of Freehold
Electricity - Mains Supply
Water – Mains Supply
Sewerage - Mains Supply
Heating - Gas

Our reference

TET250269
7th January 2026

We'd love to hear from you

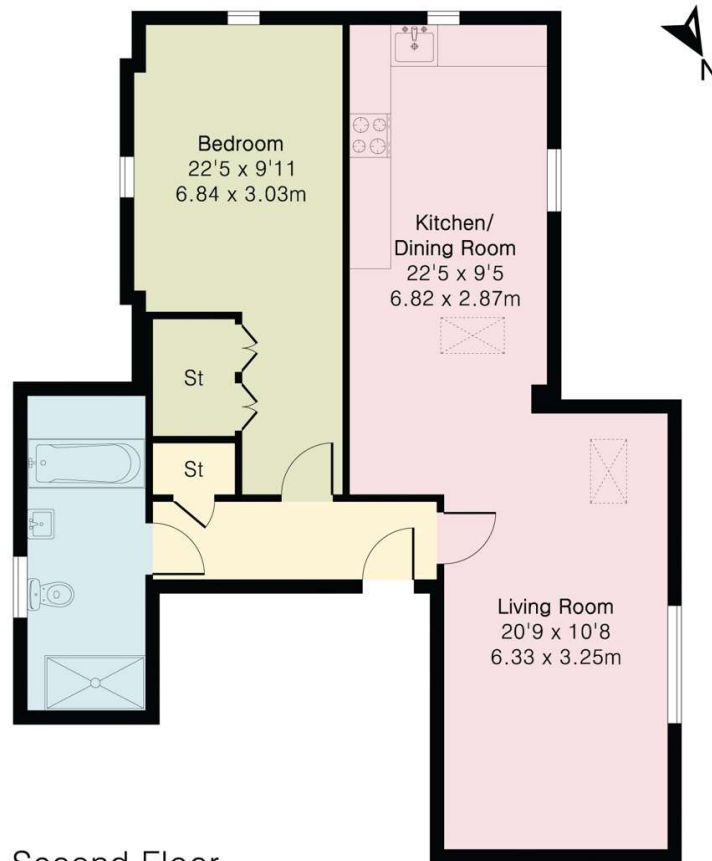
3 Church Street, Tetbury, Gloucestershire, GL8 8JG
T: 01666 504418
E: tetbury@perrybishop.co.uk

what the owner said

It is all up together and a lovely space to live in. Very bright with a good outlook. Tetbury is very welcoming and a popular market town, with lots to do and countryside around for walking and enjoyment.



Approximate Gross Internal Area 778 sq ft - 72 sq m



Second Floor

PerryBishop
PROPERTY MADE PERSONAL

perrybishop.co.uk

ID Checks: Please advise that we charge an admin fee of £25.00 for each individual and £40.00 for a joint purchase when purchasing from us which is payable on a non-refundable basis at the start of the transaction. **Disclaimer:** These particulars should not be relied upon as statement or representation of fact and do not constitute part of an offer or contract. The seller does not make or give, nor do we or our employees have the authority to make or give any representation or warranty in relation to this property. We would strongly recommend that all the information we provide about the property is verified by yourself on inspection. We have not carried out a survey nor have we tested any appliances, services or specific fittings at the property. We work with a number of partner companies that pay an average referral fee of £100.00. For specific information please contact your local branch.

Gloucestershire • Oxfordshire • Wiltshire

