

Shipton Moyne, Tetbury, GL8 8PN



- Attractive cottage with stunning views across open fields
- Spacious, light filled reception rooms
- Hand painted kitchen with access into the garden
- Separate utility room
- Downstairs cloakroom
- EPC E

# Shipton Moyne, Tetbury, GL8 8PN

## Key Features



3  
Bedrooms



1  
Bathroom



1  
Reception

## About the property

A delightful chocolate box cottage in the heart of a popular and vibrant Cotswold village.

Meander along the path to the front door, admiring the beautifully tended front garden with its borders and areas of interest and step foot into the porch.

The cottage opens into a cosy sitting room with a feature fireplace with a wood burning stove and double doors ready to throw open into the garden, there is a useful storage cupboard under the stairs.

The kitchen at the rear of the home has a half vaulted ceiling with sky lights which flood the room with light, hand painted cabinets and room for a table and chairs make this a very pleasant room with French doors to open onto the garden.

Upstairs there is a generous main bedroom with bespoke storage and views across the front garden. There are two further smaller bedrooms, one with wardrobes which is used as a dressing room, both with glorious views across open fields.

Outside the gardens at the back are as fabulous as the ones at the front, a summer house is positioned to enjoy the view across open farmland.

At the bottom of the front garden is a useful garage with parking for two cars.

## Amenities

Shipton Moyne is a delightful unspoilt Cotswold village just 3 miles south of Tetbury with a popular Pub, Village Hall, Church and children's playing field. The village is surrounded by many rural walks,

Nearby, Tetbury, often referred to as the entrance to the Cotswolds, is a thriving historic Cotswold market town situated less than half an hour from both the M4 and M5 motorways and within easy reach of Cirencester, Swindon, Bristol, Cheltenham, Gloucester and Bath. There is good access to Kemble BR Station with regular Intercity services to London and other regional commercial centres.

Tetbury is well known for its royal houses being 1.5 miles north east of Highgrove House the country home of HRH the Prince of Wales, with Gatcombe Park, the home of the Princess Royal, being some 4 miles to the north. There are a good range of shops, hotels, Inns and restaurants, primary and secondary schools and leisure and sporting facilities.

Within the local area are a number of places of interest including the world famous Westonbirt Arboretum with 18 thousand trees and shrubs in some 600 acres of beautiful landscaped grounds.

## Additional Information

Additional information that may affect your decision to purchase this property is on our website under the property listing or on request from the office.

This includes: Broadband speed and mobile phone signal, flood risk, and area information.

We also ask our clients about known legal aspects such as rights of way, restrictions, and accessibility information.

## Directions

From our office in Church Street, follow the road across Bath Bridge and towards Westonbirt. After 2 miles take the left turning into Shipton Moyne.

Go past the Cat and Custard Pot on the right and take the first turning right at the triangle. The cottage can be found on the right-hand side.

## What 3 Words

**kindest.doses.modifies**

## Services & Tenure

Tenure - Freehold

Electricity - Mains Supply

Water - Mains Supply

Sewerage - Mains Supply

Heating - Oil

## Local Authority

Cotswold District Council

Council tax Band - D

## Our reference

TET260100

11th May 2026

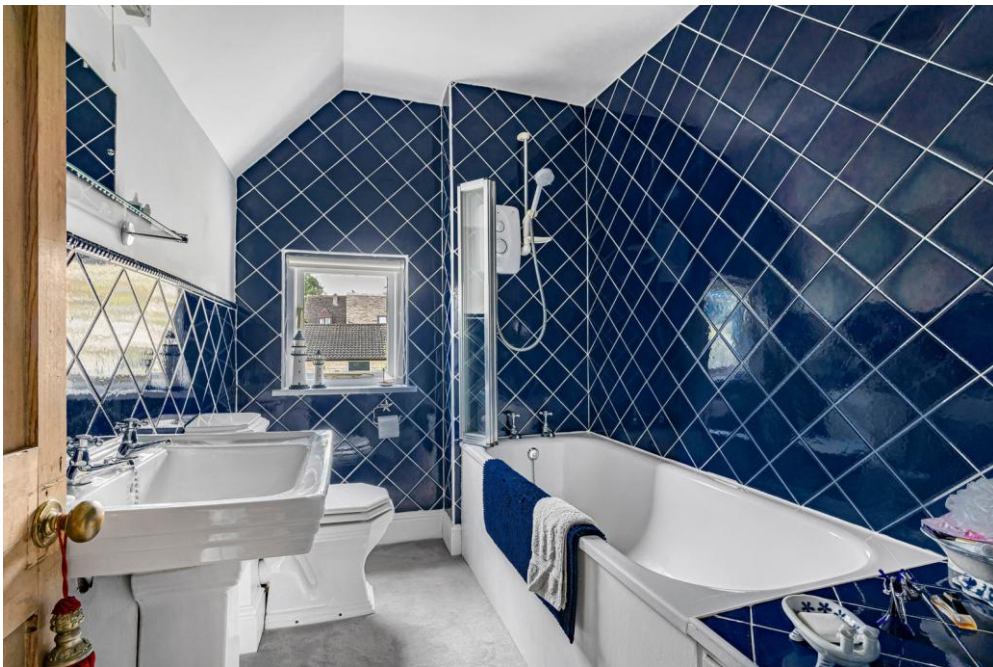
## We'd love to hear from you

3 Church Street, Tetbury, Gloucestershire, GL8 8JG

T: 01666 504418

E: tetbury@perrybishop.co.uk





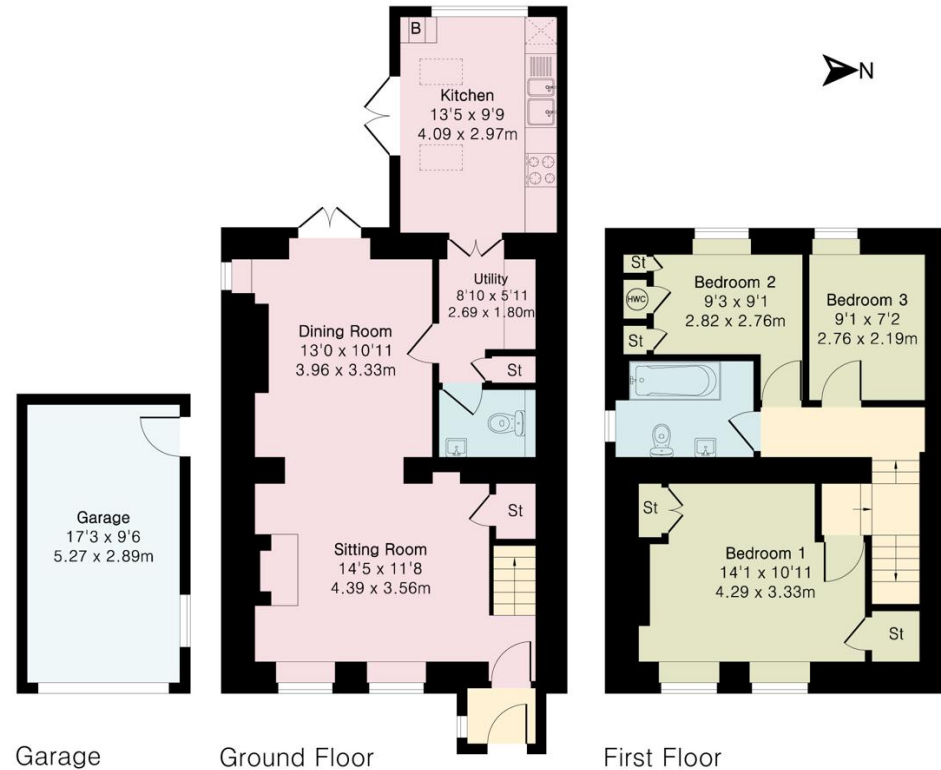


**Approximate Gross Internal Area 1224 sq ft - 113 sq m  
(Including Garage)**

Ground Floor Area 597 sq ft – 55 sq m

First Floor Area 463 sq ft – 43 sq m

Garage Area 164 sq ft – 15 sq m



**PerryBishop**  
PROPERTY MADE PERSONAL



Floor plan produced in accordance with RICS Property Measurement 2nd Edition. Although Pink Plan Ltd ensures the highest level of accuracy, measurements of doors, windows and rooms are approximate and no responsibility is taken for error, omission or misstatement. These plans are for representation purposes only and no guarantee is given on the total square footage of the property within this plan. The figure icon is for initial guidance only and should not be relied on as a basis of valuation.



[perrybishop.co.uk](http://perrybishop.co.uk)

**ID Checks:** Please advise that we charge an admin fee of £25.00 for each individual and £40.00 for a joint purchase when purchasing from us which is payable on a non-refundable basis at the start of the transaction. **Disclaimer:** These particulars should not be relied upon as statement or representation of fact and do not constitute part of an offer or contract. The seller does not make or give, nor do we or our employees have the authority to make or give any representation or warranty in relation to this property. We would strongly recommend that all the information we provide about the property is verified by yourself on inspection. We have not carried out a survey nor have we tested any appliances, services or specific fittings at the property. We work with a number of partner companies that pay an average referral fee of £100.00. For specific information please contact your local branch.

